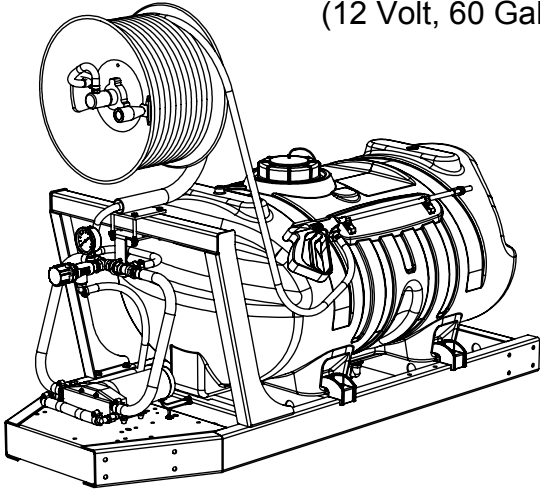


OWNER'S MANUAL

Model: TSSK-60 (5301161)

(12 Volt, 60 Gallon Skid Mounted Tree Sprayer)



**BEFORE RETURNING THIS PRODUCT
FOR ANY REASON, PLEASE CALL
1-800-831-0027**

**IF YOU SHOULD HAVE A QUESTION OR
EXPERIENCE A PROBLEM WITH YOUR
FIMCO INDUSTRIES PRODUCT:
1-800-831-0027**

**BEFORE YOU CALL, PLEASE HAVE THE
FOLLOWING INFORMATION AVAILABLE:
SALES RECEIPT & MODEL NUMBER. IN MOST
CASES, A FIMCO INDUSTRIES EMPLOYEE CAN
RESOLVE THE PROBLEM OVER THE PHONE.**

General Information

Thank you for purchasing this FIMCO product. The purpose of this manual is to assist you in operating and maintaining your tree (skid) sprayer. Please read it carefully, as it furnishes information which will help you achieve years of trouble-free operation.

Warranty/Parts/Service

Products are warranted for one year from date of purchase against manufacturer or workmanship defects.

Commercial users have a 90 day warranty.

Your authorized dealer is the best source of replacement parts and service. To obtain prompt, efficient service, always remember to give the following information...

- Correct Part Description and/or part number.
- Model number/Serial number of your sprayer.

Part descriptions and part numbers can be obtained from the illustrated parts list section(s) of this manual.

Whenever you need parts or repair service, contact your distributor/dealer first. For warranty work, always take your original sales slip, or other evidence of purchase date, to your distributor/dealer.

Technical Specifications

- 60 Gal. Corrosion-Resistant Polyethylene Tank
- 12 Volt Plunger Pump
- 1.5 (G.P.M.) Max. - 22 Amp
- Adjustable Pressure Range (0-140 psi)
- 25 Ft. Handgun Hose w/Pistol-Grip Handgun
- Suction Line Filter

Assembly

This unit comes mostly assembled. The hose reel needs to be attached to the reel mount by using the (4) screws and nuts from the parts bag. Feed the screws through the base of the hose reel, across the square tube of the reel mount, and into the backing plate. (see exploded view drawing) The hoses coming off the hose reel need to be connected to the handgun and to the manifold as shown in the exploded view drawing.

Using a good grade of thread sealant, thread the pressure gauge in place.

Referring to the wiring diagram, connect the battery wire assembly to the pump. Hook up the wiring to an existing 12 volt power source. The red clamp of the 2-wire set must be connected to the positive (+) post on the battery, or the 'HOT' connection on a switch or an ammeter. The black clamp may be grounded or connected to the negative (-) battery post.

Operation

1. The pumping system draws solution from the tank, through the strainer, and to the pump. The pump forces the solution under pressure to the handgun.
2. The strainer is located near the suction line shut-off valve. Turning this valve off will allow you to remove the strainer/screen and clean it out. Do this periodically.
3. A pressure relief valve is included in the plumbing. Turning the handle IN will increase pressure, and turning the handle OUT will decrease pressure.
4. It is very important to test the sprayer with plain water before attempting actual spraying. This will enable you to check the sprayer for leaks in the plumbing system, without the possibility of losing any expensive chemicals.
5. Open the tank lid and be sure the tank is clean and free of foreign material. Fill the tank about half full with plain water.
6. Open the valve in the suction line and allow water to flow to the pump.
7. The tank may be drained by removing the valve from the swivel fitting and screen. Opening the valve will allow the solution to run out. The solution may be drained into a convenient container.



www.fimcoindustries.com

1000 FIMCO Lane, P.O. Box 1700, North Sioux City, SD 57049
Toll Free Phone: 800-831-0027 : Toll Free Fax: 800-494-0440

Form No. 694 [5004551 (03/09)] Printed in the U.S.A.

After Spraying

WARNING:

Some chemicals will damage the pump is allowed to soak untreated for a length of time. Always flush the pump after use. Do not allow chemicals to sit in the pump for extended times of idleness. Flushing may be done easily by taking apart the suction line at the strainer and by connecting a garden hose to the fitting. Open the handgun. Turn on the garden hose and allow water to flow from the nozzle for 30 seconds. Follow chemical manufacturer's instructions on disposal of all waste water from the sprayer.

Conditions of weather and terrain must be considered when setting the sprayer. Do not spray on windy days. Protective clothing must be worn in some cases.

Be sure to read the chemical label(s) correctly!

Winter Storage

Drain all water out of your sprayer, paying special attention to the pump, handgun, and valve(s). These items are especially prone to damage from chemicals and freezing weather.

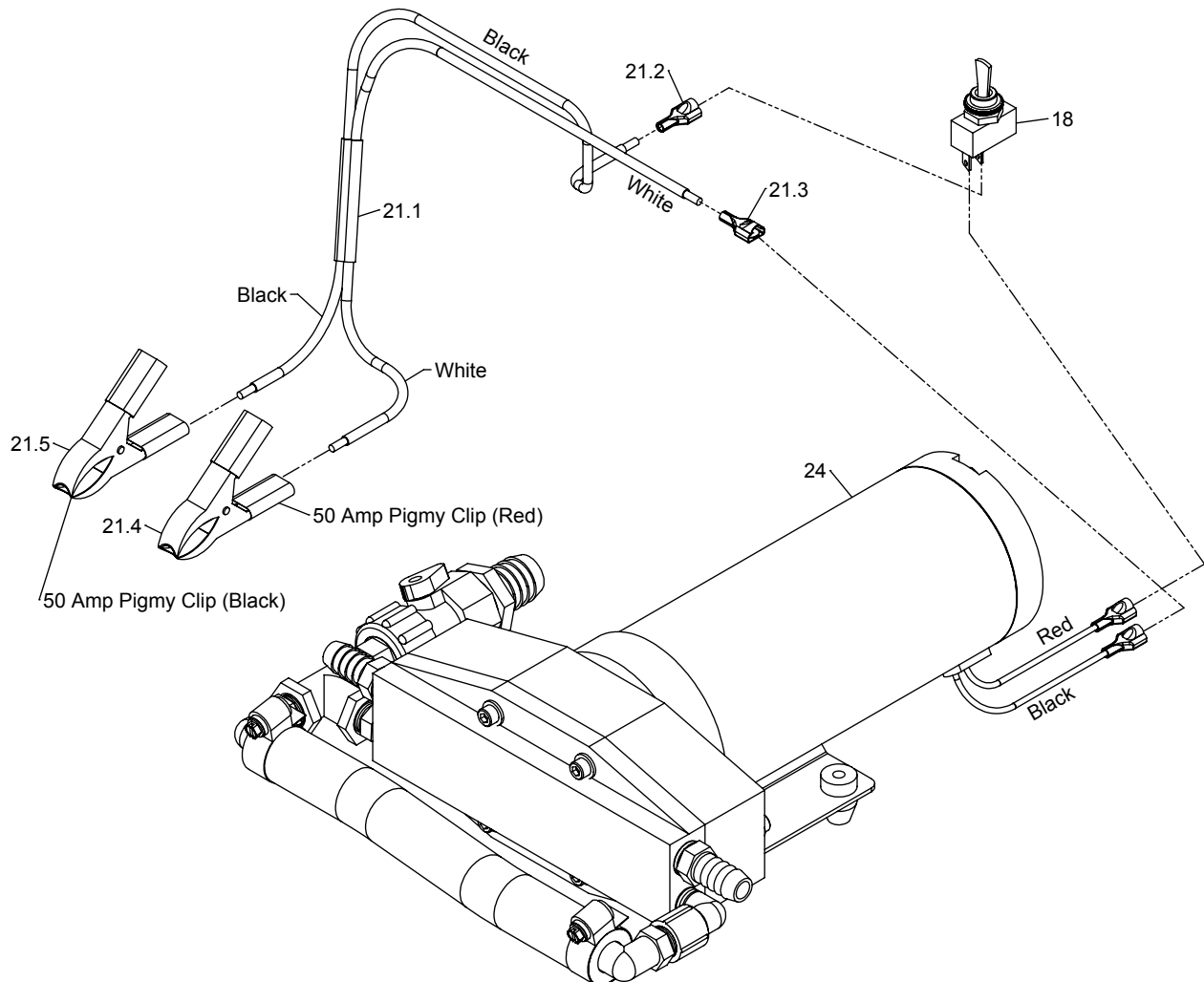
The sprayer should be winterized before storage by pumping a solution of RV antifreeze through the entire plumbing system. This antifreeze solution should remain in the plumbing system during the winter months. When spring time comes and you are preparing your sprayer for the spray season, rinse the entire plumbing system out, clearing the lines of the antifreeze solution. Proper care and maintenance will prolong the life of your sprayer.

After use, fill the sprayer tank part way with water. Start the sprayer, and allow the clear water to be pumped through the plumbing system and out through the spray nozzles. Refill the tank about half full with plain water and use a chemical neutralizer, such as 'Nutra-Sol', or equivalent, and repeat cleaning instructions above. A mix of water and some detergent, such as 'Dawn' dish soap would be a sufficient alternative. Flush the entire sprayer with the neutralizing/cleaning agent, then flush out one more time with plain water. Follow the chemical manufacturer's disposal instructions of all wash or rinsing water.

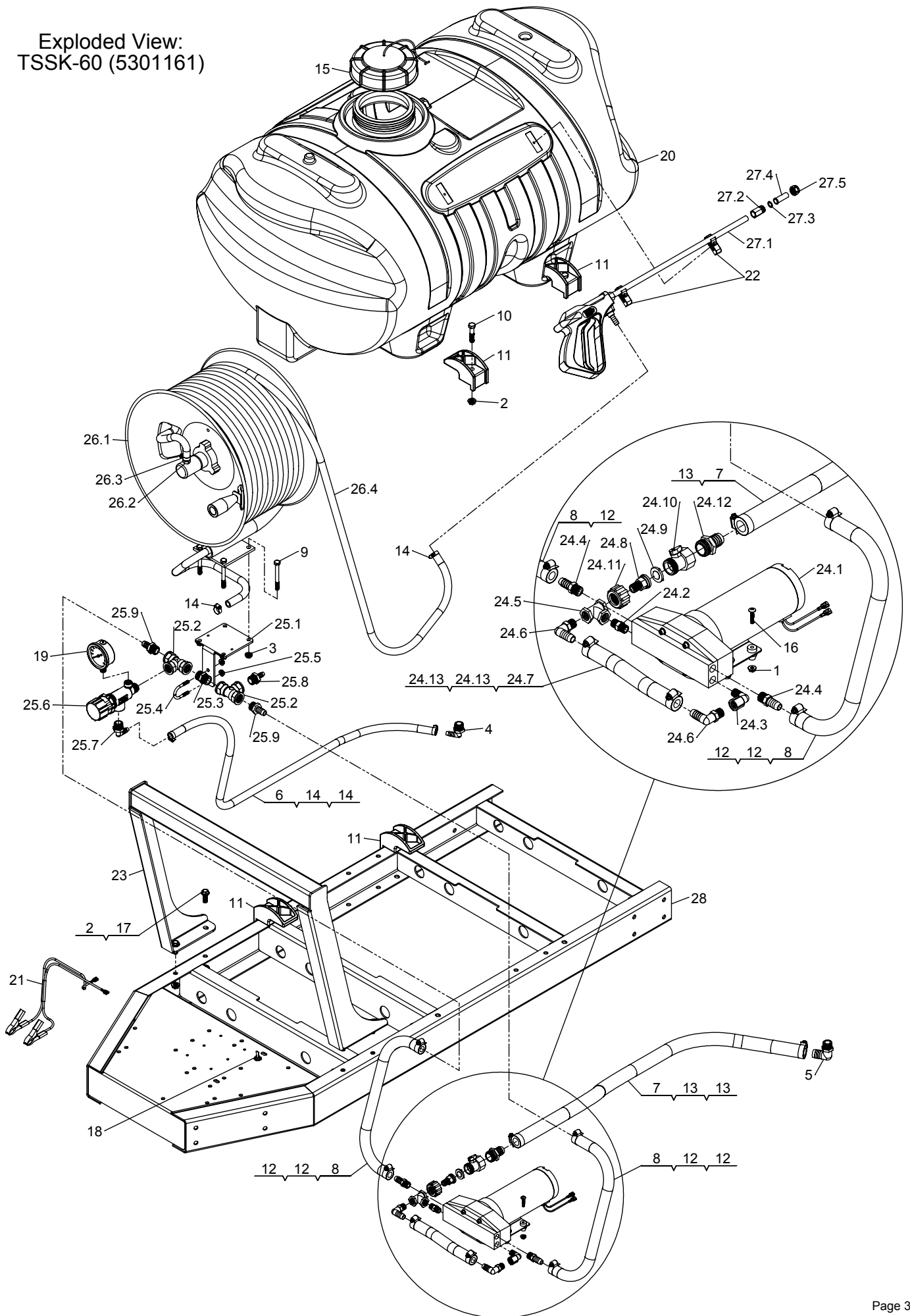
For the boom, (if applicable) remove the tips and screens from the nozzle assemblies. Wash these items out thoroughly. Blow the orifice clean and dry. If the orifice remains clogged, clean it with a fine bristle (NOT WIRE) brush, or with a toothpick. Do not damage the orifice. Water rinse and dry the tips before storing.

WARNING: Some chemicals will damage the pump valves if allowed to soak untreated for a length of time! ALWAYS flush the pump as instructed after each use.

Wiring Diagram
(TSSK-60)



Exploded View:
TSSK-60 (5301161)



Parts List: TSSK-60 (5301161)

Item No	Part Number	Qty	Description	List Price
1	5006186	4	#10-24 Hex Whiz (Flange) Locknut	.10
2	5006259	8	3/8"-16 Hex Whiz (Flange) Locknut	.25
3	5006307	4	5/16"-18 Hex Whiz (Flange) Locknut	.25
4	5010038	1	Nylon Elbow, 1/2" MNPT x 3/8" HB	.75
5	5010152	1	Nylon Elbow, 1/2" MNPT x 3/4" HB	.88
6	5020161	1	Hose, 3/8"-1 Brd. x 48"	2.54
7	5020172	1	Hose, 3/4"-2 Brd. x 42"	4.61
8	5020299	2	Hose, 1/2"-2 Brd. x 20"	2.07
9	5034035	4	H.H.C.S., 5/16"-18 x 3"	.43
10	5034101	4	H.H.C.S., 3/8"-16 x 1 3/4"	.50
11	5038698	4	Plastic Tank Hold-Down Leg Clip	2.93
12	5051022	4	Hose Clamp, 1/2"	.62
13	5051024	2	Hose Clamp, 3/4"	.67
14	5051114	4	Hose Clamp, 3/8"	.63
15	5058188	1	Tank Lid w/Lanyard	10.50
16	5117168	4	#10-24 x 1" Phillips Truss Head Machine Screw	.25
17	5117307	4	3/8"-16 x 1" Whiz (Flange) Lockscrew	.46
18	5157016	1	Mini Toggle Switch, Model 1700 Series	8.27
19	5167080	1	Gauge, Liquid-Filled, 0-200 PSI	21.75
20	5169249	1	60 Gallon Elliptical Tank (White)	129.00
21	5274511	1	Battery Wire Ass'y (20 Ft.)	39.57
21.1	5157189	1	10 Ga. Duplex Wire x 20 Ft.	16.56
21.2	5157065	1	1/4" Female Push-On Terminal (10-12 Ga.)	.75
21.3	5157064	1	1/4" Male Push-On Terminal (10-12 Ga.)	.75
21.4	5157094	1	50 Amp Pigmy Clip (Red)	2.25
21.5	5157138	1	50 Amp Pigmy Clip (Black)	2.25
22	5274880	1	Pkg. (2) Handgun Clips & (2) Screws	2.85
23	5274901	1	Hose Reel Mount Weldment	64.27
24	5275074	1	Pump Assembly (TSSK-60)	430.00
24.1	5274513	1	12V PUMPTec Pump Assembly w/Terminals	401.82
24.2	5011181	1	Brass Hex Nipple, 1/4"	.75
24.3	5010137	1	Nylon Street Elbow, 1/4" NPT	2.52
24.4	5067023	2	Nylon Fitting, 1/4" MNPT x 1/2" HB	.56
24.5	5010154	1	Nylon Tee, 1/4" FNPT	3.92
24.6	5010047	2	Nylon Elbow, 1/4" MNPT x 1/2" HB	.77
24.7	5020193	1	Hose, 1/2"-2 Brd. x 9"	1.87
24.8	5005242	1	Nylon Swivel Fitting, 1/4" MNPT	1.61
24.9	5116242	1	Strainer, 1" Filter Washer	.31
24.10	5143188	1	Nylon Shut-Off Valve	3.10
24.11	5006055	1	Nylon Swivel Nut, 3/4" FGHT	.48
24.12	5067028	1	Nylon Fitting, 3/4" MGHT x 3/4" HB	.59
24.13	5051022	2	Hose Clamp, 1/2"	.62
25	5275075	1	Pressure Relief Valve & Manifold Assembly (TSSK-60)	47.37
25.1	5017929	1	Backing/Mounting Plate	4.77
25.2	5010113	2	Nylon "Tee" Fitting, 1/2" FNPT	3.09
25.3	5011054	1	Nylon Close Nipple, 1/2" MNPT	.41
25.4	5034197	1	Round U-Bolt, 1/4"-20 x 1" x 1 3/4" (3/4" Thread)	.90
25.5	5006306	2	1/4"-20 Hex Whiz (Flange) Locknut	.05
25.6	5143200	1	Pressure Relief Valve (1/2" NPT)	31.74
25.7	5010038	1	Nylon Elbow, 1/2" MNPT x 3/8" HB	.75
25.8	5067016	1	Nylon Fitting, 1/2" MNPT x 3/8" HB	.50
25.9	5067017	2	Nylon Fitting, 1/2" MNPT x 1/2" HB	.48
26	5275076	1	Hose Reel Assembly (TSSK-60)	149.95
26.1	5274515	1	Rapid Reel Hose Reel (w/100 Ft. Hose)	160.00
26.2	5067005	1	Nylon Fitting, 1/4" MNPT x 3/8" HB	.55
26.3	5051114	1	Hose Clamp, 3/8"	.63
26.4	5020099	1	Hose, 3/8"-2 Brd. x 25 Ft.	19.60
27	5275078	1	Handgun Assembly (TSSK-60)	49.16
27.1	5274514	1	Handgun (5273959) Less Adj. Nozzle	22.96
27.2	5002303	1	TeeJet Body, 1/4" NPT	2.05
27.3	5072105	1	Gasket, Nylon	1.46
27.4	5138679	1	Orifice Tip (H.S.S.)	23.60
27.5	5046033	1	Cap, Aluminum	1.16
28	5275758	1	60 Gallon Skid Weldment (Red)	208.35

(List Prices are Subject to Change)