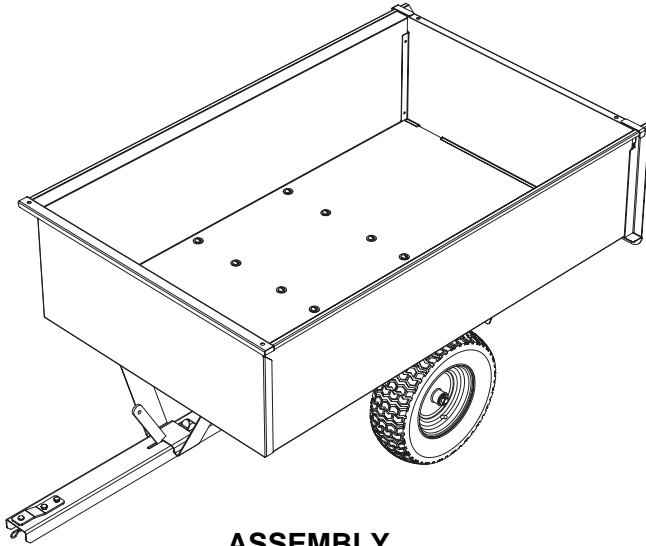


**5301397**  
**MODEL NO. TC-17**

**5301483**  
**MODEL NO. TC-17-BOM**

**17 CU. TRAILER CART WITH BOLT ON FEATURES**  
**ASSEMBLY / OPERATION INSTRUCTIONS / PARTS**



**ASSEMBLY**

Remove tailgate and turn cart upside down for ease of assembly.

1. Bolt axle housing (Ref. 19) to 17 cu. cart weldment (Ref. 20). Using 3/8" - 16 x 1" slotted screws (Ref. 18).
2. Affix yoke brace (Ref. 9) to cart body (Ref. 20) in a similar manner.
3. Slide axle (Ref. 6) through axle support (Ref. 19) and tongue assembly (Ref 14).
4. Center the axle and place wheel (Ref. 5) over axle followed by machine bushing (Ref. 11) on the outside of the wheel.
5. Secure with Cotter Pin (Ref. 16). Repeat procedure for the otherside.

**USING YOUR DUMP CART**

**To Dump:** Pull latch toward mower, and cart body will tilt back to dump position.

**To Return To Pulling Position:** Push down on the front of the cart body until latch engages and pedestal secures to the tow bar.

Tractor speed should be governed by weight of load. The heavier the load, the slower the speed for safe operation.

**MAINTENANCE INSTRUCTIONS**

Check tire pressure at regular intervals. Proper inflation will prolong life of tires.

NOTE: 1700 lbs. maximum capacity  
Approximate weight 1 Cu. Ft.  
Dirt: 150 lbs.  
Sand: 125 lbs.  
Gravel: 110 lbs.  
Max Speed: 4 MPH

**WARNING DANGER OF IMPROPER USE  
OF TRAILER CART**

This unit is intended for use only with riding mowers or tractors. It is definitely not for highway use, being pulled at high speeds, or transporting passengers of any sort. Such use could result in injuries for which we cannot be held responsible.

---

PLEASE DO NOT RETURN THIS MERCHANDISE TO THE STORE. CALL US AND WE WILL TAKE CARE OF ANY PROBLEM YOU MIGHT HAVE WITH THIS PRODUCT.

**HOW TO ORDER PARTS:**

When ordering parts, always give model number, part number, part description and inspector number.

**SEND TO:** 800-831-0027  
FIMCO INC. P: 605-232-6800  
1000 Fimco Lane F: 605-232-6814  
North Sioux City, SD 57049



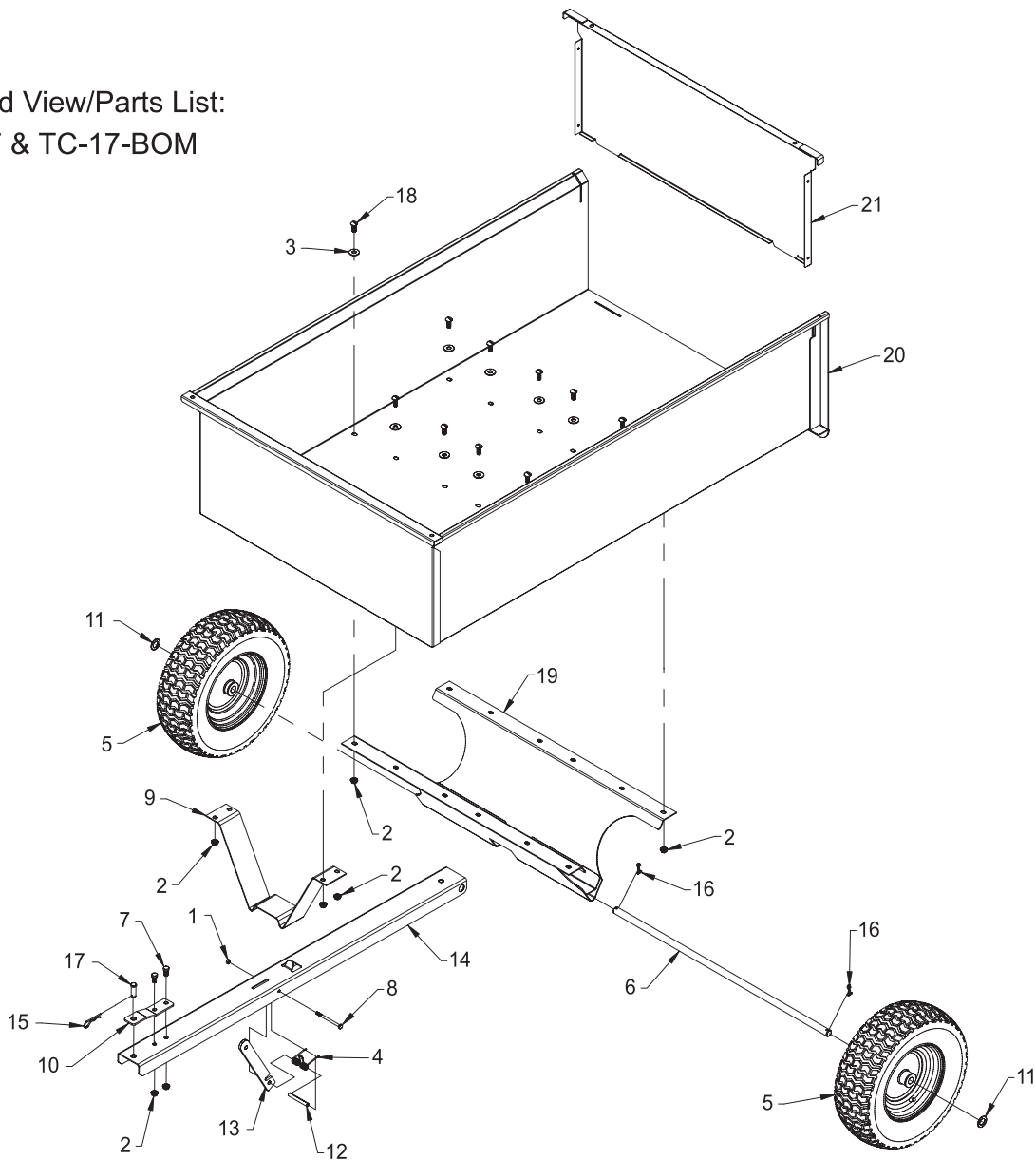
WWW.FIMCOINDUSTRIES.COM

1000 FIMCO LANE • P.O. BOX 1700 • NO. SIOUX CITY, SD 57049  
TOLL FREE: 800-831-0027 • TOLL FREE FAX: 800-494-0440  
Form No. 1030 (5004673 8/06) Printed In U.S.A.

**LIMITED WARRANTY**

This unit is warranted against defects in materials and workmanship to the original purchaser, under normal use and service, for a period of ninety (90) days from date of sale. During the warranty period, we will repair or replace at our option free of charge to the original purchaser, any part of the unit that our examination shows to be defective in workmanship or materials. This warranty does not apply to damage in transit or damage caused by misuse, abuse, neglect, normal wear, or alterations by unauthorized persons.

Exploded View/Parts List:  
TC-17 & TC-17-BOM



Item No.	Part Number	Qty	Description	List Price
1	5006160	1	1/4"-20 Hex Locknut	.25
2	5006259	18	3/8"-16 Hex Whiz (Flange) Locknut	.18
3	5016030	16	Flatwasher, 3/8"	.25
4	5019262	1	Tongue Spring, Zinc-Plated	1.49
5	5021089	2	Wheel, 16 x 6.50-8, Turf Tread	34.95
6	5024100	1	Axle ( 15 & 17 Cu. Ft. Dump Trailers)	11.75
7	5034099	2	H.H.C.S., 3/8"-16 x 3/4"	.30
8	5034321	1	H.H.C.S., 1/4"-20 x 3 1/2"	.45
9	5037617	1	Yoke Brace	13.59
10	5038722	1	10 Cu. Ft. Dump Cart Hitch	4.54
11	5041094	2	Machine Bushing, 3/4" I.D. (14 Ga.) x 1 1/4" O.D.	.50
12	5041141	1	Tongue Latch Bushing	.63
13	5090008	1	Dump Cart Latch	2.42
14	5096103	1	Tongue (17 Cu. Ft. Dump Cart)	24.87
15	5101065	1	Hitch Pin Clip, (Hair-Pin Cotter 0.120")	.40
16	5101207	2	Cotter Pin, 5/32" x 1 3/4"	.10
17	5101268	1	1/2" x 1 1/2" Clevis Pin	.75
18	5117306	16	3/8"-16 Slotted Round Head Machine Screw x 1"	.13
19	5275048	1	Axle Housing Weldment (15 & 17 Cu. Ft. Carts)	82.18
20	5275049	1	17 Cu. Ft. Cart Weldment	205.18
21	5275059	1	Clip-to-Tailgate Weldment (17 Cu.)	34.13