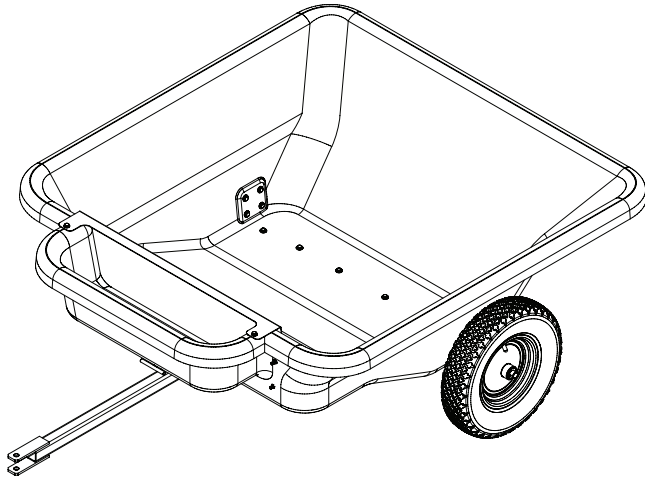


5301816
MODEL NO. TC-12-P
12 CU. POLY CART TRAILER
ASSEMBLY / PARTS



1. Correct part description and part number.
2. Model Number of your sprayer.
3. Serial Number of your sprayer.

Part description and part numbers can be obtained from the illustrated parts list section of this manual.

Whenever you need parts or repair service, contact your distributor / dealer first. For warranty work always take your original sales slip, or other evidence of purchase date, to your distributor / dealer.

TECHNICAL SPECIFICATIONS

- 12 Cubic Ft. Poly Trailer Cart
- 300 lb. Maximum Capacity
- 16" Stud Tread Tires With Metal Hubs
- Molded-In Tool Caddy

NOTE: Tractor speed should be governed by weight of load. The heavier the load, the slower the speed for safe operation.

MAINTENANCE INSTRUCTIONS

Check tire pressure at regular intervals. Proper inflation will prolong life of tires.

NOTE: 300 lbs. maximum capacity
Approximate weight 1 Cu. Ft.
Dirt: 150 lbs.
Sand: 125 lbs.
Gravel: 110 lbs.
Max Speed: 4 MPH

**BEFORE RETURNING THIS PRODUCT
FOR ANY REASON, PLEASE CALL
1-800-831-0027**

**IF YOU SHOULD HAVE A QUESTION OR
EXPERIENCE A PROBLEM WITH YOUR
FIMCO INDUSTRIES PRODUCT:
1-800-831-0027**

**BEFORE YOU CALL, PLEASE HAVE THE
FOLLOWING INFORMATION AVAILABLE:
SALES RECEIPT & MODEL NUMBER. IN MOST
CASES, A FIMCO INDUSTRIES EMPLOYEE CAN
RESOLVE THE PROBLEM OVER THE PHONE.**

GENERAL INFORMATION

The purpose of this manual is to assist you in operating and maintaining your lawn and garden sprayer. Please read it carefully as it furnishes information which will help you achieve years of dependable trouble free operation.

WARRANTY / PARTS / SERVICE

Products are warranted for one year from date of purchase against manufacturer or workmanship defects.

Your authorized dealer is the best source of replacement parts and service. To obtain prompt, efficient service, always remember to give the following information:



WWW.FIMCOINDUSTRIES.COM

1000 FIMCO LANE • P.O. BOX 1700 • NO. SIOUX CITY, SD 57049
TOLL FREE: 800-831-0027 • TOLL FREE FAX: 800-494-0440
Form No. 1702 (5008090 8/08) Printed In U.S.A.

LIMITED WARRANTY

This unit is warranted against defects in materials and workmanship to the original purchaser, under normal use and service, for a period of ninety (90) days from date of sale. During the warranty period, we will repair or replace at our option free of charge to the original purchaser, any part of the unit that our examination shows to be defective in workmanship or materials. This warranty does not apply to damage in transit or damage caused by misuse, abuse, neglect, normal wear, or alterations by unauthorized persons.

ASSEMBLY INSTRUCTIONS

Remove the parts to the unit from the carton. Refer to the exploded view and parts list to help identify the parts.

You cart will come mostly assembled. The only assembly necessary will be as follows:

1. Place the wheels onto the axles, making sure the valve stems are facing outwards. Slide a machinery bushing (Item 9) onto the axle, and secure the wheel(s) with a cotter pin (Item 12).
2. Position the pre-assembled tongue between the two tabs in the middle of the axle. Run a pin (Item 13) through the holes at this connection point, and secure in place with (2) cotter pins (Item 12).
3. Rotate the tongue assembly upward until the latch pin is near the latch plate (Item 6). Pull the latch handle towards the front of the unit to allow the tongue to rotate up just a bit further for the 'locked' position.
4. You are now ready to use your new poly cart!
5. For dumping your cart's load, follow 'Step 3' in reverse.

WARNING DANGER OF IMPROPER USE OF TRAILER CART

This unit is intended for use only with riding mowers or tractors. It is definitely not for highway use, being pulled at high speeds, or transporting passengers of any sort. Such use could result in injuries for which we cannot be held responsible.

**PLEASE DO NOT RETURN THIS MERCHANDISE
TO THE STORE. CALL US AND WE WILL TAKE
CARE OF ANY PROBLEM YOU MIGHT HAVE
WITH THIS PRODUCT.**

HOW TO ORDER PARTS:

When ordering parts, always give model number, part number, part description and inspector number.

SEND TO:

FIMCO INC.

1000 Fimco Lane

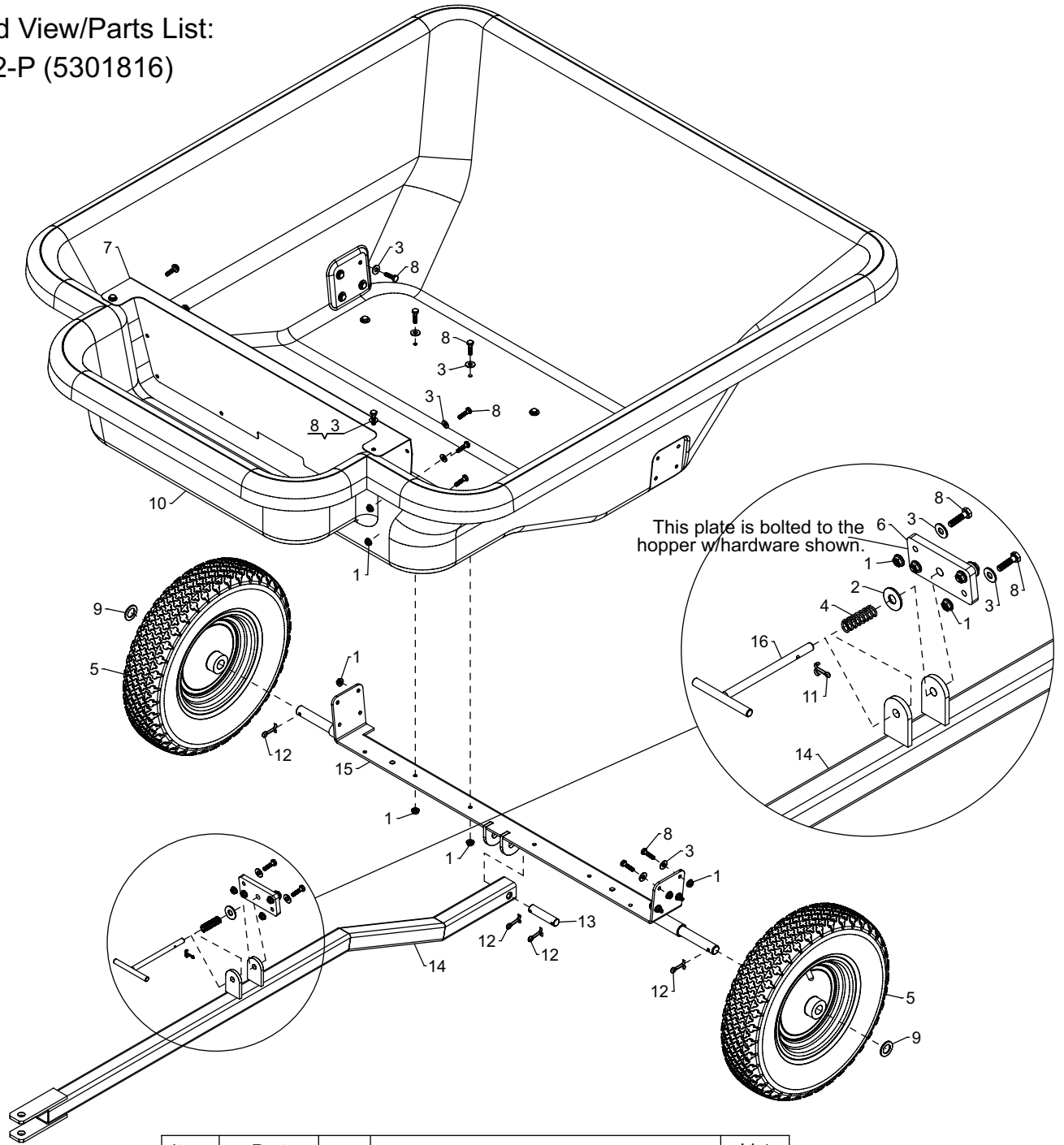
North Sioux City, SD 57049

Toll Free: 800-831-0027

P: 605-232-6800

F: 605-232-6814

Exploded View/Parts List:
TC-12-P (5301816)



Item No	Part Number	Qty	Description	List Price
1	5006306	28	1/4"-20 Hex Whiz (Flange) Locknut	.05
2	5016030	1	Flatwasher, 3/8"	.25
3	5016114	28	Flatwasher, 1/4"	.02
4	5019243	1	Release Latch Return Spring	3.20
5	5021090	2	Tire, 4.80 x 8 (2-Ply)	29.67
6	5027078	1	Latch Lock Plate	
7	5027081	1	Toolbox Cover	
8	5034083	28	H.H.C.S., 1/4"-20 x 1"	.25
9	5041094	2	Mach. Bush., 3/4" ID x 1 1/4" OD	.50
10	5083006	1	12 Cu. Ft. Poly Cart Hopper	
11	5101077	1	Cotter Pin, 1/8" x 1"	.25
12	5101086	4	Cotter Pin, 3/16" x 1 1/2" (Zinc-Plated)	.25
13	5101293	1	Center Pivot Pin	
14	5275820	1	Tongue Weldment	
15	5275821	1	Axle Mount Weldment	
16	5275822	1	Latch	