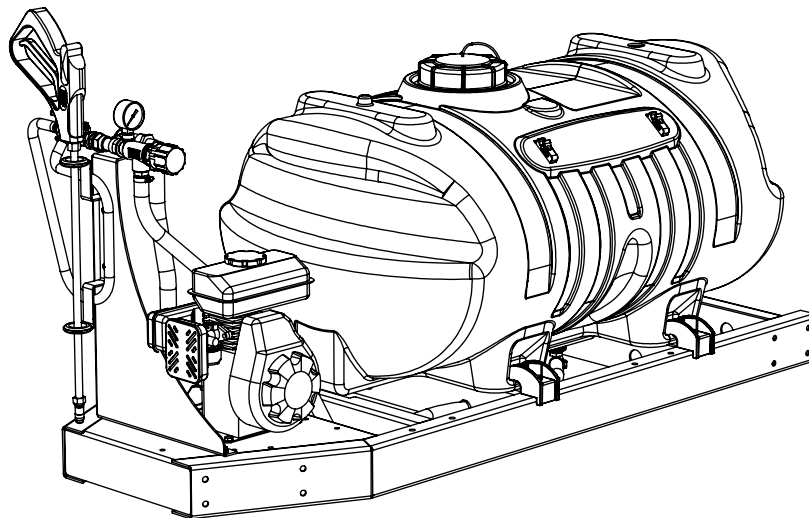


OWNER'S MANUAL

Model: SK-61-4R (5301336)

(60 Gallon Skid Sprayer w/2.5 H.P. Engine, 4-Roller Pump, Deluxe Handgun)



BEFORE RETURNING THIS PRODUCT
FOR ANY REASON, PLEASE CALL

1-800-831-0027

IF YOU SHOULD HAVE A QUESTION OR
EXPERIENCE A PROBLEM WITH YOUR
FIMCO INDUSTRIES PRODUCT:

1-800-831-0027

BEFORE YOU CALL, PLEASE HAVE THE
FOLLOWING INFORMATION AVAILABLE:
SALES RECEIPT & MODEL NUMBER. IN MOST
CASES, A FIMCO INDUSTRIES EMPLOYEE CAN
RESOLVE THE PROBLEM OVER THE PHONE.

Technical Specifications

- 2.5 H.P. Recoil Start Engine
- 4 Roller Pump - 6 G.P.M.
- Pressure Relief Valve
 - Pressure Gauge
 - Suction Line Filter
- 25 Ft. Hand Gun Hose
- Pistol Grip Spray Gun
- Optional Trailers & Boom Features Available

General Information

Thank you for purchasing this product. The purpose of this manual is to assist you in operating and maintaining your skid sprayer. Please read it carefully, as it furnishes information which will help you achieve years of trouble-free operation.

Warranty/Parts/Service

Products are warranted for one year from date of purchase against manufacturer or workmanship defects.

Commercial users have a 90 day warranty.

Your authorized dealer is the best source of replacement parts and service. To obtain prompt, efficient service, always remember to give the following information...

- Correct Part Description and/or part number.
- Model number/Serial number of your sprayer.

Part descriptions and part numbers can be obtained from the illustrated parts list section(s) of this manual.

Whenever you need parts or repair service, contact your distributor/dealer first. For warranty work, always take your original sales slip, or other evidence of purchase date, to your distributor/dealer.

Assembly

The sprayer is completely assembled except for the pressure gauge, and the only other time any assembly is required is if you have purchased the optional trailer assembly, or optional boom assembly. Note: Add proper oil to the engine crankcase and gasoline to the gas tank. Refer to the engine manual for the correct type and amount. It is important to test the sprayer with plain water before actual spraying is attempted. This will enable you to check the sprayer for leaks in the plumbing system.



www.fimcoindustries.com

1000 FIMCO Lane, P.O. Box 1700, North Sioux City, SD 57049
Toll Free Phone: 800-831-0027 : Toll Free Fax: 800-494-0440

Form No. 804 [5004589 (12/10)] Printed in the U.S.A.

Testing the Sprayer

1. Open the tank lid and be sure the tank is clean and free of foreign material. Fill the tank about 1/2 full with plain water.

NOTE:

It is VERY important for you to test your sprayer with plain water before actual spraying is attempted. This will enable you to check the sprayer for leaks, without the possibility of losing any expensive chemicals.

CAUTION: Always be sure that water has reached the roller pump before starting your sprayer. If the pump is run dry, serious damage to the pump will result. Do not run your sprayer with the boom/handgun line closed AND the bypass line closed. Doing this will damage the pump.

2. Open the brass valve in the suction line and allow water to flow to the pump. The valve is located at this point to enable the strainer to be taken apart for cleaning, while solution remains in the tank.

3. It is always best to start the sprayer at little or no pressure. This sprayer is equipped with a spring loaded pressure relief/bypass valve. Turn the valve knob out to decrease pressure and in for increased pressure.

The bypass valve is the "pressure control" for the entire plumbing system. The more that valve is open, the lower your line pressure. Fully closed provides maximum pressure to your boom and/or handgun.

4. You may now start the sprayer engine following the engine manufacturers instructions. Let the sprayer run at low pressure until water has reached the handgun and all air has been purged from the system.

CAUTION: Care must be taken, being sure the handgun is secured in the operators hand. If this is not done a recoiling action may occur causing damage or personal injury.

Information About The Sprayer

In this pumping system, solution is drawn from the tank, and forced to a planned source, such as boom nozzles, or handgun. The pressure is controlled by opening/closing the valve which recirculates solution back into the tank..

Maintenance During/After Spraying

Periodically close the suction line valve. Check the line strainer and clean the screen. Always flush the entire plumbing system with water or a neutralizing agent, such as FIMCO Tank Neutralizer and Cleaner, after completing the spraying operation.

Proper care and maintenance will prolong the life of your sprayer.

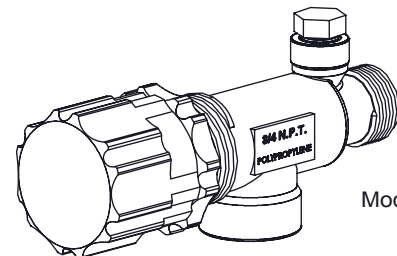
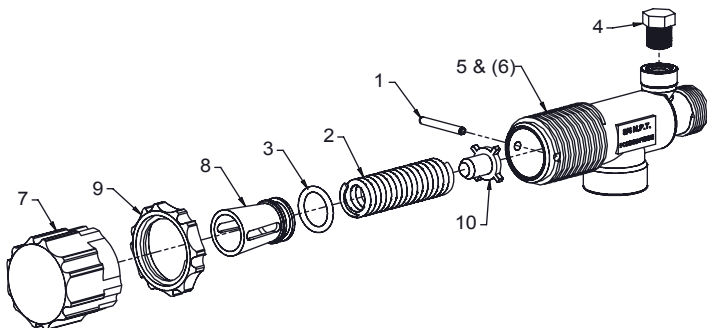
After use, fill the sprayer tank part way with water. Start the sprayer, and allow the clear water to be pumped through the plumbing system and out through the spray nozzles. Refill the tank about half full with plain water and use FIMCO Tank Neutralizer and Cleaner, and repeat cleaning instructions above.

Flush the entire sprayer with the neutralizing/cleaning agent, then flush out one more time with plain water. Follow the chemical manufacturer's disposal instructions of all wash or rinsing water. For the boom, (if applicable) remove the tips and screens from the nozzle assemblies. Wash these items out thoroughly. Blow the orifice clean and dry. If the orifice remains clogged, clean it with a fine bristle (NOT WIRE) brush, or with a toothpick. Do not damage the orifice. Water rinse and dry the tips before storing.

WARNING: Some chemicals will damage the pump valves if allowed to soak untreated for a length of time! ALWAYS flush the pump as instructed after each use.

PISTON TYPE PRESSURE RELIEF/REGULATING VALVES

Bypasses excess liquid. Adjustable to maintain control of line pressure at any pressure within the valve operating range. Selected pressure setting firmly held in place by locknut. Extra large passages to handle large flows.



Model 23120

- Polypropylene with stainless steel spring
- Excellent chemical resistance
- EPDM O-Rings
- For pressure to 150 p.s.i.
- 1/4" port for pressure gauge
- Choice of 1/2" or 3/4" NPT (M) inlet & (F) outlet connections

FIMCO Number	Mfg Part Number	Description	List Price
5143199	23120-3/4-PP	3/4" Poly Valve	34.68
5143200	23120-1/2-PP	1/2" Poly Valve	34.68
5168717	PK-AB23120-KIT	Repair Kit, Items Marked **	17.10

Item No.	Part Number	Mfg Part Number	5143199 Qty	5143200 Qty	Description	List Price
1	**	CP23126-302SS	1	1	Retaining Pin	---
2	**	CP23127-302SS	1	1	Spring	---
3	**	CP7717-15-EPR	1	1	O-Ring, EPDM Rubber	---
4	---	---	1	1	Pipe Plug, 1/4" MNPT	---
5	---	CP23121-PP	1	-	Poly Body (3/4" NPT)	20.90
6	---	CP23128-PP	-	1	Poly Body (1/2" NPT)	20.90
7	5046270	CP23122-NY	1	1	Adjusting Cap, Nylon (Gray)	11.08
8	5108095	CP23124-PP	1	1	Spring Retainer	5.63
9	5110266	CP23123-PP	1	1	Lock Ring	5.94
10	5115078	CP23125-PP	1	1	Guide Seat	4.34

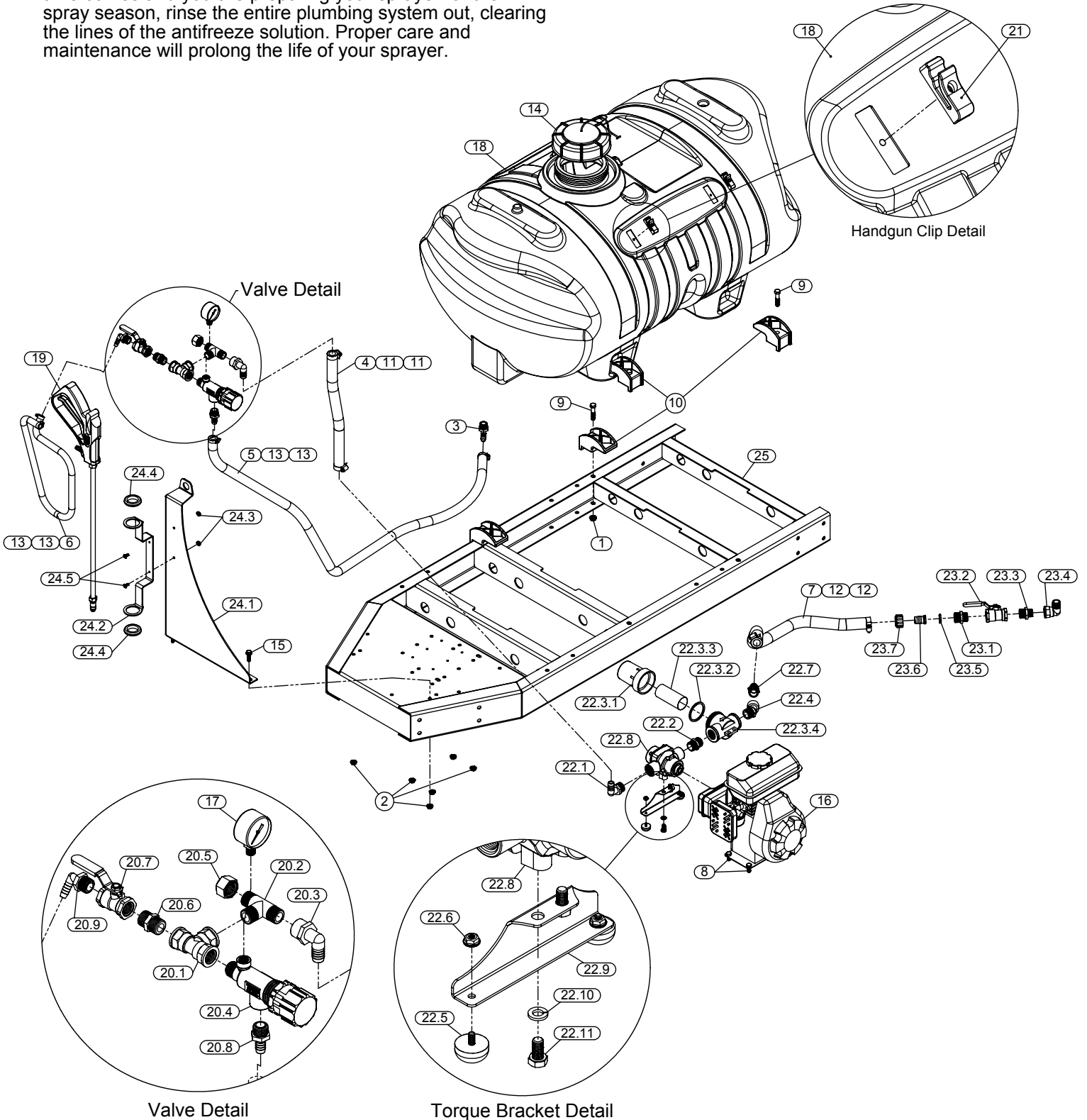
How to order: Specify valve number (Example: 23120-1/2-PP Polypropylene)

Winter Storage

Drain all water out of your sprayer, paying special attention to the pump, handgun, and valve(s). These items are especially prone to damage from chemicals and freezing weather.

The sprayer should be winterized before storage by pumping a solution of RV antifreeze through the entire plumbing system. This antifreeze solution should remain in the plumbing system during the winter months. When spring time comes and you are preparing your sprayer for the spray season, rinse the entire plumbing system out, clearing the lines of the antifreeze solution. Proper care and maintenance will prolong the life of your sprayer.

Exploded View:
SK-61-4R (5301336)

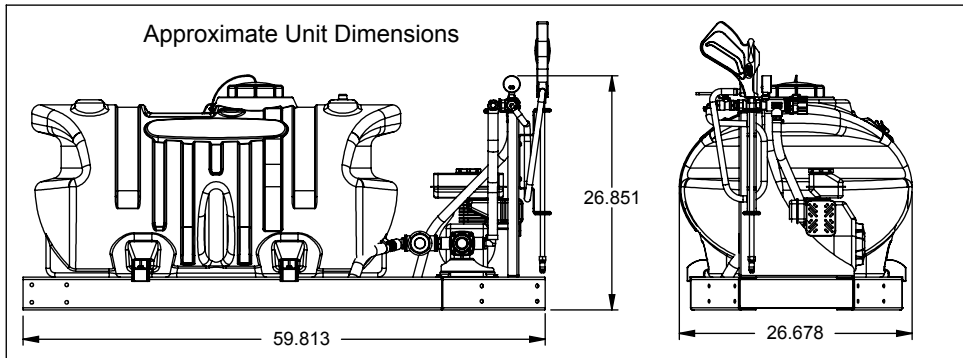


Parts List Model: SK-61-4R (5301336)

Item No	Part Number	Qty	Description	List Price
1	5006259	4	3/8"-16 Hex Whiz (Flange) Locknut	.25
2	5006307	6	5/16"-18 Hex Whiz (Flange) Locknut	.25
3	5010039	1	Nylon Elbow, 1/2" MNPT x 1/2" HB	1.06
4	5020077	1	Hose, 5/8"-1 Brd. x 16"	2.22
5	5020123	1	Hose, 1/2"-1 Brd. x 60"	4.21
6	5020135	1	Hose, 3/8"-1 Brd. x 25 Ft.	17.25
7	5020378	1	Hose, 3/4"-2 Brd. x 21"	3.20
8	5034038	4	H.H.C.S., 5/16"-18 x 3/4"	.55
9	5034101	4	H.H.C.S., 3/8"-16 x 1 3/4"	.50
10	5038698	4	Plastic Tank Hold-Down Leg Clip	2.93
11	5051023	2	Hose Clamp, 5/8"	.67
12	5051024	2	Hose Clamp, 3/4"	.81
13	5051114	4	Hose Clamp (3/8"-1/2")	.63
14	5058188	1	Tank Lid w/Lanyard	10.50
15	5117300	2	5/16"-18 x 1" Flange Whiz Lock Screw	.25
16	5152104	1	2.5 HP Engine	224.00
17	5167004	1	Gauge, 0-200# (Dry)	5.99
18	5169249	1	60 Gallon Elliptical Tank (White)	139.00
19	5273959	1	Deluxe Pistol-Grip Handgun w/X-26 Tip	24.95
20	5274707	1	Valve Assembly	66.50
20.1	5010113	1	Nylon "Tee" Fitting, 1/2" FNPT	5.40
20.2	5010258	1	Poly Tee Fitting, 1/2" MNPT	5.47
20.3	5149085	1	Nylon Hose Fitting, 1/2" FNPT x 5/8" HB	1.80
20.4	5143200	1	Pressure Relief Valve (1/2" NPT)	31.74
20.5	5046392	1	Nylon Hex Cap, 1/2" FNPT	.56
20.6	5011054	1	Nylon Close Nipple, 1/2" MNPT	.62
20.7	5143197	1	1/2" T-800 Brass Ball Valve	9.45
20.8	5067017	1	Nylon Fitting, 1/2" MNPT x 1/2" HB	.48
20.9	5010038	1	Nylon Elbow, 1/2" MNPT x 3/8" HB	1.05
21	5274880	1	Pkg. (2) Handgun Clips & (2) Screws	2.85
22	5274885	1	Pump Sub-Assembly	176.29
22.1	5010037	1	Nylon Elbow, 3/4" MNPT x 5/8" HB	.92

Item No	Part Number	Qty	Description	List Price
22.2	5011055	1	Nylon Close Nipple, 3/4" MNPT	.78
22.3	5116322	1	3/4" Black Poly Strainer	10.75
22.3.1	5058125	1	Strainer Bowl	9.60
22.3.2	5072229	1	EPDM Gasket	2.10
22.3.3	5116323	1	40 Mesh Screen	4.00
22.3.4	5046088	1	Strainer Cap	10.00
22.4	5010192	1	45 Degree Nylon Street Elbow, 3/4" NPT	1.60
22.5	5040004	2	Rubber-Headed Machine Screw Bumper (#10-24)	1.75
22.6	5006186	2	#10-24 Hex Whiz (Flange) Locknut	.25
22.7	5010020	1	Nylon Fitting, 3/4" MNPT x 3/4" HB	.78
22.8	5275495	1	4-Roller Pump (Cast Iron with 1/2" Dia. Hollow Shaft)	132.85
22.9	5038730	1	Torque Bracket	3.95
22.10	5016026	2	Lockwasher, 5/16"	.25
22.11	5034154	2	H.H.C.S., 5/16"-18 x 5/8"	.25
23	5274939	1	Tank Valve Assembly	16.59
23.1	5005022	1	Nylon Male Street Adapter, 3/4" MGHT x 3/4" MNPT	.78
23.2	5143190	1	3/4" "T-800" Brass Ball Valve	9.99
23.3	5011129	1	Nylon Reducing Nipple, 3/4" MNPT x 1/2" MNPT	.74
23.4	5010148	1	Nylon Street Elbow, 1/2" MNPT x 1/2" FNPT	3.12
23.5	5016066	1	Garden Hose Washer	.20
23.6	5149013	1	Nylon Swivel, 3/4" Flat Seat Hose Barb	.55
23.7	5006055	1	Nylon Swivel Nut, 3/4" FGHT	.64
24	5275405	1	Valve Mount Sub-Assembly	36.33
24.1	5038704	1	Valve Mount Bracket	21.63
24.2	5038638	1	Handgun Holder Bracket	11.83
24.3	5006186	2	#10-24 Hex Whiz (Flange) Locknut	.25
24.4	5075014	2	Rubber Grommet (Black)	2.79
24.5	5117234	2	#10-24 x 1/2" Phillips Truss Head Machine Screw	.25
25	5275758	1	60 Gallon Skid Weldment (Red)	218.26

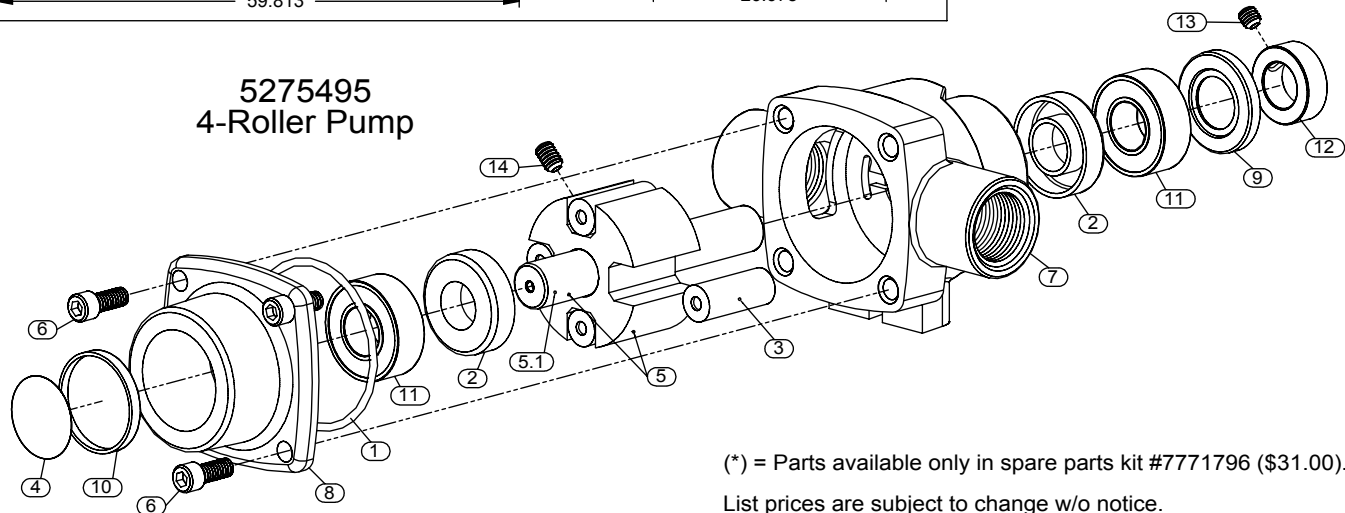
(List Prices are Subject to Change)



STOP WARNING STOP

DO NOT USE PUMP IN AN EXPLOSIVE ENVIRONMENT. DO NOT USE TO PUMP FLAMMABLE FLUIDS, GASOLINE, KEROSENE, FUEL, OIL, ETC.

5275495 4-Roller Pump



(*) = Parts available only in spare parts kit #7771796 (\$31.00).

List prices are subject to change w/o notice.

Item No	Part Number	Qty	Description	List Price
1	* 5072220	1	O-Ring Gasket	.75
2	* 5110052	2	Seal (Viton)	8.65
3	* 5112029	4	Super Roller (4-Roller Pump)	3.15
4	---	1	Pump Model Sticker	---
5	0301-4101N	1	Rotor & Shaft Assembly	157.00
5.1	0551-4000	1	Hollow Shaft (Only)	30.00
6	2220-0018	4	End Plate Screw	.70

Item No	Part Number	Qty	Description	List Price
7	5002351	1	Body w/Seal	105.00
8	5017233	1	End Plate	41.50
9	5017480	1	Shaft Bearing Cover	1.20
10	5017481	1	Bearing Cover	1.15
11	5031113	2	Ball Bearing (Sealed)	8.25
12	5055007	1	Collar	4.90
13	5117049	1	Collar Set Screw	1.55
14	5117050	1	1/4"-20 x 3/8" Set Screw	1.05