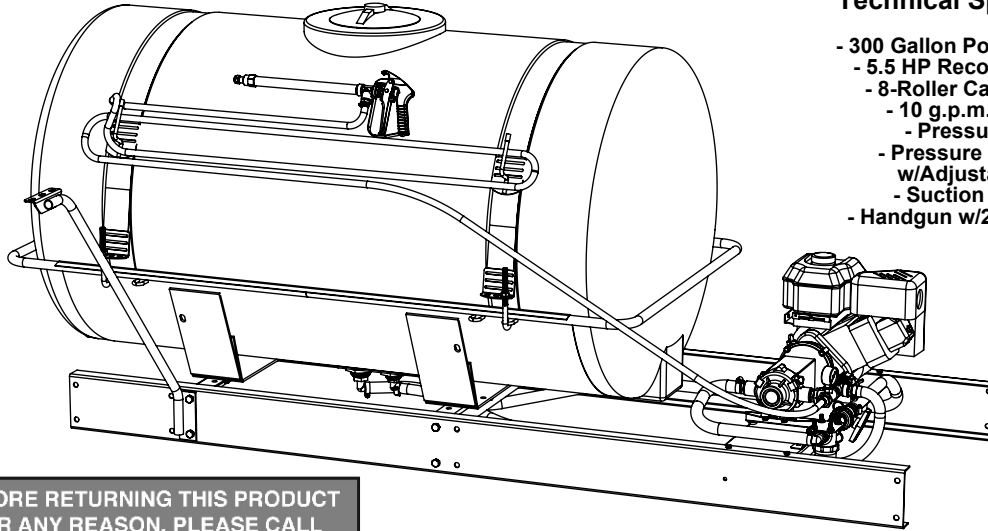


# OWNER'S MANUAL

## Model: 9-300 (5300656)

(300 Gallon, 5.5 HP Skid Sprayer)



### Technical Specifications

- 300 Gallon Polyethylene Tank
- 5.5 HP Recoil Start Engine
- 8-Roller Cast Iron Pump
- 10 g.p.m. @ 250 PSI
- Pressure Gauge
- Pressure Relief Valve w/Adjustable Range
- Suction Line Filter
- Handgun w/25 Feet of Hose

BEFORE RETURNING THIS PRODUCT  
FOR ANY REASON, PLEASE CALL

**1-800-831-0027**

IF YOU SHOULD HAVE A QUESTION OR  
EXPERIENCE A PROBLEM WITH YOUR  
FIMCO INDUSTRIES PRODUCT:

**1-800-831-0027**

BEFORE YOU CALL, PLEASE HAVE THE  
FOLLOWING INFORMATION AVAILABLE:  
SALES RECEIPT & MODEL NUMBER. IN MOST  
CASES, A FIMCO INDUSTRIES EMPLOYEE CAN  
RESOLVE THE PROBLEM OVER THE PHONE.

### General Information

Thank you for purchasing this product. The purpose of this manual is to assist you in operating and maintaining your skid sprayer. Please read it carefully, as it furnishes information which will help you achieve years of trouble-free operation.

### Warranty/Parts/Service

Products are warranted for one year from date of purchase against manufacturer or workmanship defects.

Commercial users have a 90 day warranty.

Your authorized dealer is the best source of replacement parts and service. To obtain prompt, efficient service, always remember to give the following information...

- Correct Part Description and/or part number.
- Model number/Serial number of your sprayer.

Part descriptions and part numbers can be obtained from the illustrated parts list section(s) of this manual.

Whenever you need parts or repair service, contact your distributor/dealer first. For warranty work, always take your original sales slip, or other evidence of purchase date, to your distributor/dealer.

### Assembly

1. Read through the entire assembly instructions before starting. Do not tighten the nuts and bolts until all parts are in place. Saw horses or some other kind of stand may be used as a work base for easier assembly, but be sure that the footing is secure so that the unit will not fall from the stand, which could cause damage and/or injury.
2. Bolt the parts together as shown on the drawing. Note the position of the holes in the cross members as illustrated.
3. Mount the saddle together to the cross members using (4) 1/2" x 1-1/4" hex cap screws & (4) 1/2" flange locknuts.
4. Read through all of the instructions before starting the assembly. Check the parts to familiarize yourself with the sprayer. The exploded view drawing(s) and parts list(s) will help you identify the parts.
5. The engine and pump have been sub-assembled at the factory. Use (4) 5/16" x 1-1/2" bolts to attach the engine to the skid base plate. Secure the bolts in place with (4) 5/16" hex flange locknuts.
6. Thread the fittings into the tank bottom ports. Use a good grade of thread sealant on ALL fittings to insure no leaks in the plumbing system.
7. Attach the hose clip for the suction hose to the right side of the skid, using (1) 1/4" x 1" flange lockscrew and (1) 1/4" flange locknut.
8. Attach the strainer bracket to the base plate as shown in the exploded view drawing, using (1) 5/16" x 5/8" flange screw and (1) 5/16" flange locknut.
9. Connect the suction line fittings and bypass line fittings (from the tank to the pump fittings) with hoses. Secure the hoses in place with their respective hose clamps. (Refer to the exploded view drawings for correct hose lengths and hose clamp sizes used.)
10. Join the handgun hose to the handgun and to the fitting at the pump. Secure with hose clamps.
11. Wrap the handgun hose around the hose holders which are attached to the tank straps.



[www.fimcoindustries.com](http://www.fimcoindustries.com)

1000 FIMCO Lane, P.O. Box 1700, North Sioux City, SD 57049  
Toll Free Phone: 800-831-0027 : Toll Free Fax: 800-494-0440

Form No. 411 [5004381 (02/10)] Printed in the U.S.A.

## Testing the Sprayer

### NOTE:

It is **VERY** important for you to test your sprayer with plain water before actual spraying is attempted. This will enable you to check the sprayer for leaks, without the possibility of losing any expensive chemicals.

Read the operating instructions.

1. Open tank lid and be sure the tank is clean and free of foreign material. Fill the tank about half full with plain water.
2. Open the valve at the strainer inlet and allow water to flow to the pump. The valve is located at this point to enable the strainer to be taken apart for cleaning.
3. It is best to start the sprayer at little or no pressure. This sprayer is equipped with a spring loaded relief valve. Turn the valve handle out to decrease pressure, and in for increased pressure.
4. You may now start the sprayer engine following the engine manufacturer's instructions. Let the sprayer run at low pressure until water has reached the handgun, and all air has been purged from the handgun line.

**CAUTION: Care must be taken, being sure the handgun is secured in the operator's hand. If this is NOT done, a recoiling action may occur causing damage or personal injury.**

5. The pressure should now be increased to 30-40 psi. Operate the sprayer at this increased pressure for 3 to 5 minutes, thoroughly testing the unit before adding chemicals.

When everything tests all right (no leaks, & good pressure), add the desired chemicals to the mixture and water combination and start your spraying operation. Adjust the pressure and spray as you did in the testing procedure. The sprayer should now be ready for use.

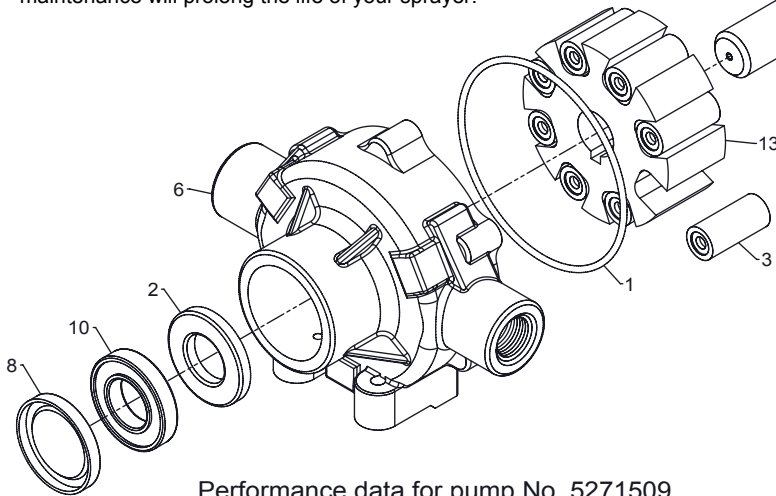
Conditions of weather and terrain must be considered when setting the sprayer. Do not spray on windy days. Protective clothing must be worn in some cases.

**Be sure to read the chemical label(s) correctly!**

## Winter Storage

Drain all water out of your sprayer, paying special attention to the pump, handgun, and valve(s). These items are especially prone to damage from chemicals and freezing weather.

The sprayer should be winterized before storage by pumping a solution of RV antifreeze through the entire plumbing system. This antifreeze solution should remain in the plumbing system during the winter months. When spring time comes and you are preparing your sprayer for the spray season, rinse the entire plumbing system out, clearing the lines of the antifreeze solution. Proper care and maintenance will prolong the life of your sprayer.



Performance data for pump No. 5271509

Pump Speed (RPM)	0 p.s.i.		50 p.s.i.		100 p.s.i.		150 p.s.i.		200 p.s.i.		250 p.s.i.		300 p.s.i.	
	GPM	HP	GPM	HP	GPM	HP	GPM	HP	GPM	HP	GPM	HP	GPM	HP
600	14.0	.45	13.1	.87	12.1	1.41	11.2	1.98	10.6	2.5	10.0	3.1	9.1	3.7

## After Spraying

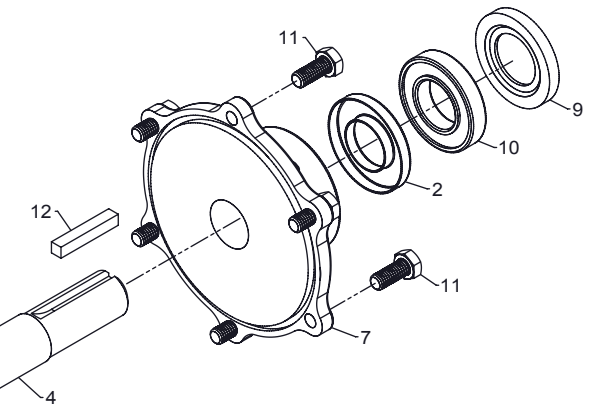
After use, fill the sprayer tank part way with water. Start the sprayer, and allow the clear water to be pumped through the plumbing system and out through the spray nozzles. Refill the tank about half full with plain water and use FIMCO Tank Neutralizer and Cleaner, and repeat cleaning instructions above.

Flush the entire sprayer with the neutralizing/cleaning agent, then flush out one more time with plain water. Follow the chemical manufacturer's disposal instructions of all wash or rinsing water.

For the boom, (if applicable) remove the tips and screens from the nozzle assemblies. Wash these items out thoroughly. Blow the orifice clean and dry. If the orifice remains clogged, clean it with a fine bristle (NOT WIRE) brush, or with a toothpick. Do not damage the orifice. Water rinse and dry the tips before storing.

**WARNING: Some chemicals will damage the pump valves if allowed to soak untreated for a length of time! ALWAYS flush the pump as instructed after each use.**

#5271509  
(8-Roller Pump)  
Exploded View/Parts List

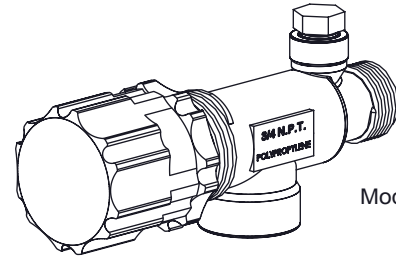
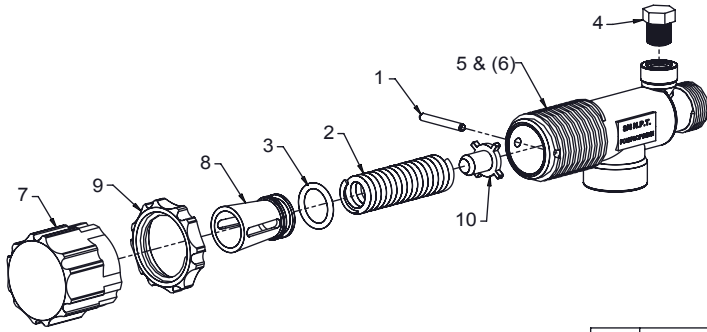


Item No	Part Number	Qty	Description	List Price
1	* 5072059	1	O-Ring Gasket	1.75
2	* 5110058	2	Viton Seal (Standard)	13.00
3	* 5112030	8	Super Roller (Standard)	2.85
4	0510-7500	1	Shaft	---
5	1610-0059	1	Key (Stainless Steel)	---
6	5002174	1	Body (Cast Iron w/Seal)	102.00
7	5017175	1	End Plate (Cast Iron)	62.75
8	5017522	1	Bearing Cover	1.10
9	5017523	1	Shaft Bearing Cover	1.10
10	5031044	2	Sealed Ball Bearing	11.75
11	5034038	6	H.H.C.S., 5/16"-18 x 3/4"	.55
12	5089012	1	Key	1.25
13	5172137	1	Rotor (Phenolic)	38.00

\* = Parts Available ONLY in Repair Kit #7771794 (\$47.25)

# PISTON TYPE PRESSURE RELIEF/REGULATING VALVES

Bypasses excess liquid. Adjustable to maintain control of line pressure at any pressure within the valve operating range. Selected pressure setting firmly held in place by locknut. Extra large passages to handle large flows.



Model 23120

- Polypropylene with stainless steel spring
- Excellent chemical resistance
- EPDM O-Rings
- For pressure to 150 p.s.i.
- 1/4" port for pressure gauge
- Choice of 1/2" or 3/4" NPT (M) inlet & (F) outlet connections

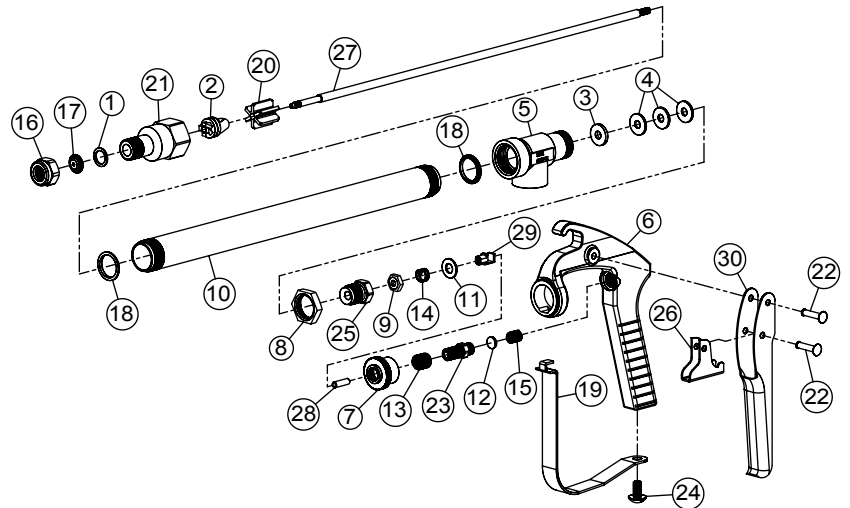
Item No.	Part Number	Mfg Part Number	5143199 Qty	5143200 Qty	Description	List Price
1	**	CP23126-302SS	1	1	Retaining Pin	---
2	**	CP23127-302SS	1	1	Spring	---
3	**	CP7717-15-EPR	1	1	O-Ring, EPDM Rubber	---
4	---	---	1	1	Pipe Plug, 1/4" MNPT	---
5	---	CP23121-PP	1	-	Poly Body (3/4" NPT)	---
6	---	CP23128-PP	-	1	Poly Body (1/2" NPT)	---
7	5046270	CP23122-NY	1	1	Adjusting Cap, Nylon (Gray)	10.86
8	5108095	CP23124-PP	1	1	Spring Retainer	5.51
9	5110266	CP23123-PP	1	1	Lock Ring	5.82
10	5115078	CP23125-PP	1	1	Guide Seat	4.25

How to order: Specify valve number (Example: 23120-1/2-PP Polypropylene)

FIMCO Number	Mfg Part Number	Description	List Price
5143199	23120-3/4-PP	3/4" Poly Valve	34.00
5143200	23120-1/2-PP	1/2" Poly Valve	34.00
5168717	PK-AB23120-KIT	Repair Kit, Items Marked **	16.76

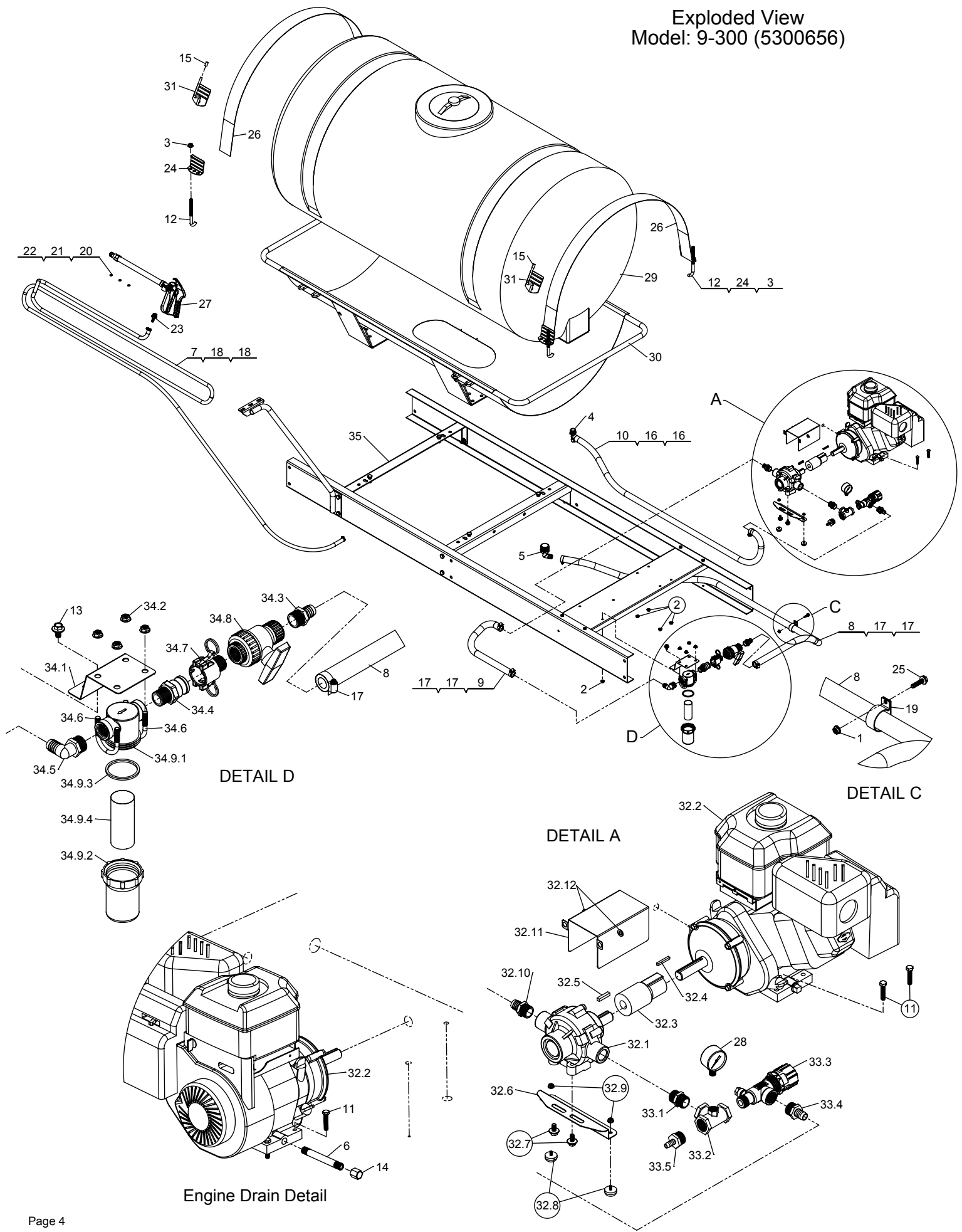
Item No.	Part Number	Qty	Description	List Price
1	**	1	Gasket, Nylon	---
2	**	1	Seat Plug, Seat Plate, Washer, & Core Sub-Assembly	---
3	**	1	Packing Washer, Type 302 Stainless Steel	---
4	**	3	Packing, Leather	---
5	5002203	1	Inlet Body, Aluminum	29.02
6	5002205	1	Handle Body, Aluminum	54.35
7	5006072	1	Stop Adjustment Nut, Steel - Zinc Plated	4.57
8	5006118	1	Locknut, Steel - Zinc-Plated	2.89
9	5006244	1	Stem Nut, Steel - Nickel Plated	5.43
10	5009080	1	Tubing, Aluminum	37.19
11	5016061	1	Washer, Stainless Steel	1.46
12	5016071	1	Spring Guide Washer, Type 302 Stainless Steel	2.44
13	5019069	1	Spring for Stop Adjustment Nut, Stainless Steel	1.55
14	5019083	1	Trigger Stop Spring, Stainless Steel	2.93
15	5019107	1	Main Spring, Stainless Steel	4.96
16	5046033	1	Cap, Aluminum	1.25
17	5063071	1	Orifice Disc, Stainless Steel	1.43
18	5072171	2	Gasket, Nylon	---
19	5076011	1	Trigger Guard, Steel - Nickel Plated	10.45
20	5077015	1	Guide Vane, Nylon	6.63
21	5084016	1	Nozzle Housing, Aluminum	17.40
22	5111017	2	Rivet, Steel - Zinc Plated	1.46
23	5117070	1	Spring Screw, Steel - Zinc Plated	4.83
24	5117143	1	Screw, Stainless Steel	1.67
25	5117165	1	Packing Screw, Aluminum	4.96
26	5131012	1	Trigger Stop, Steel - Nickel Plated	5.14
27	5132039	1	Stem, Type 416 Stainless Steel	22.90
28	5134010	1	Spring Stud, Stainless Steel	3.50
29	5166017	1	Trigger Guide, Steel - Nickel Plated	15.48
30	5166026	1	Trigger, Steel - Nickel Plated	5.86

## Exploded View/Parts List: Handgun #5163005



\*\* = Available in Spare Parts Kit ONLY!  
5168190 (#PK-AB43-AL-KIT) (\$38.24)

Exploded View  
Model: 9-300 (5300656)



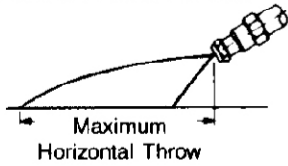
**Parts List: 9-300 (5300656)**

Item No	Part Number	Qty	Description	List Price
1	5006306	1	1/4"-20 Hex Whiz (Flange) Locknut	.25
2	5006307	5	5/16"-18 Hex Whiz (Flange) Locknut	.25
3	5006337	4	1/2"-13 Hex Whiz (Flange) Locknut	.30
4	5010037	1	Nylon Elbow, 3/4" MNPT x 5/8" HB	.92
5	5010159	1	Nylon Elbow, 1 1/4" MNPT x 3/4" HB	5.23
6	5011126	1	1/4" x 4 1/2" Galv. Pipe Nipple	3.80
7	5020099	1	Hose, 3/8"-2 Brd. x 25 Ft.	19.60
8	5020104	1	Hose, 3/4"-2 Brd. x 78"	8.62
9	5020105	1	Hose, 3/4"-2 Brd. x 36"	5.52
10	5020429	1	Hose, 5/8"-1 Brd. x 64"	5.22
11	5034069	4	H.H.C.S., 5/16"-18 x 1 1/2" (Full Thread)	.25
12	5034111	4	1/2" x 6" Hook Bolt	2.95
13	5034531	1	5/16"-18 x 5/8" Flange Lock Screw	.52
14	5046057	1	1/4" N.P.T. Galv. Hex Pipe Cap	1.25
15	5046085	2	Cap	.16
16	5051023	2	Hose Clamp, 5/8"	.67
17	5051024	4	Hose Clamp, 3/4"	.69
18	5051114	2	Hose Clamp (3/8"-1/2")	.63
19	5053075	1	Clip	3.71
20	5063067	1	Orifice Disc	1.40
21	5063069	1	Orifice Disc	1.40
22	5063073	1	Orifice Disc	1.40
23	5067016	1	Nylon Fitting, 1/2" MNPT x 3/8" HB	.50
24	5108112	4	Tank Strap Buckle (Bent, for 3" Strap)	5.40
25	5117301	1	1/4"-20 x 1" Hex Flange Screw	.14
26	5133221	2	Poly Tank Strap, 3" x 96"	8.66
27	5163005	1	GunJet Spray Gun	138.81
28	5167005	1	Gauge, 0-400 p.s.i. (Dry)	5.99
29	5169002	1	300 Gallon Tank (38" x 73" x 62 1/2")	472.00
30	5273831	1	38"-300 Saddle Weldment	297.07
31	5274364	2	Hose Hanger Weldment	8.70
32	5275145	1	Engine/Pump Sub-Assembly	1005.00

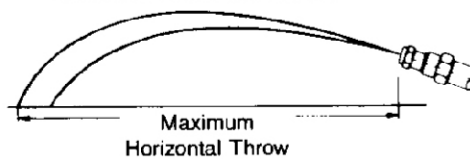
Item No	Part Number	Qty	Description	List Price
32.1	5271509	1	Reverse Rotation 8-Roller Pump	214.25
32.2	5152099	1	5.5 H.P. Engine w/ Gear Reduction	555.57
32.3	5005177	1	Adapter & Kit (Coupler)	47.75
32.4	5089033	1	3/16" Square Keystock x 1 3/8" Long	.40
32.5	5089003	1	1/4" Square Keystock x 1 1/4" Long	.45
32.6	5023052	1	Torque Bracket	4.81
32.7	5034531	2	5/16"-18 x 5/8" Flange Lock Screw	.52
32.8	5040004	2	Rubber-Headed Machine Screw Bumper (#10-24)	1.75
32.9	5006186	2	#10-24 Hex Whiz (Flange) Locknut	.25
32.10	5010020	1	Nylon Fitting, 3/4" MNPT x 3/4" HB	.76
32.11	5120044	1	Shield	5.74
32.12	5016026	2	Lockwasher, 5/16"	.25
33	5275337	1	Pressure Relief Valve Assembly	21.52
33.1	5011055	1	Nylon Close Nipple, 3/4" MNPT	.76
33.2	5010135	1	Nylon Gauge Tee, 3/4" FNPT	14.93
33.3	5143199	1	Pressure Relief Valve, (3/4" NPT)	34.00
33.4	5067013	1	Nylon Fitting, 3/4" MNPT x 5/8" HB	.74
33.5	5067011	1	Nylon Fitting, 3/4" MNPT x 3/8" HB	.61
34	5275953	1	Strainer Assembly (9-200/9-300)	
34.1	5038258	1	Strainer Bracket	3.99
34.2	5006307	1	5/16"-18 Hex Whiz (Flange) Locknut	.25
34.3	5010020	1	Nylon Fitting, 3/4" MNPT x 3/4" HB	.76
34.4	5005158	1	Banjo Male Adapter, 3/4" MNPT	4.80
34.5	5010028	1	Nylon Elbow, 3/4" MNPT x 3/4" HB	1.29
34.6	5034065	1	Round U-Bolt, 5/16"-18 x 1 1/2" x 2 3/16"	1.15
34.7	5057109	1	Banjo Female Coupler, 3/4" MNPT	9.42
34.8	5143206	1	3/4" Single Union Ball Valve	11.76
34.9	5116136	1	Strainer	16.75
34.9.1	5046173	1	Strainer Cap	.94
34.9.2	5058035	1	Strainer Bowl (Nylon)	5.40
34.9.3	5072194	1	Viton Gasket	6.10
34.9.4	5116131	1	Screen (40 Mesh)	5.35
35	SK-3	1	SK-3 Skid	

List Prices are Subject to Change

**SETTING "A"  
WIDE ANGLE CONE SPRAY**



**SETTING "C"  
STRAIGHT STREAM SPRAY**



Tip No.	Data	Liquid Pressure in Lbs. per Square Inch							
		40 P.S.I. Setting		100 P.S.I. Setting		200 P.S.I. Setting		300 P.S.I. Setting	
		"A"	"C"	"A"	"C"	"A"	"C"	"A"	"C"
<b>D-2</b>	Capacity G.P.M.	.29	.30	.45	.47	.64	.66	.78	.81
	Spray Angle	20°	—	25°	—	20°	—	19°	—
	Max. Throw — Ft.	10	32	10	33	10	34	10.5	35
	Max. Vert. Throw Ft.	—	22	—	22	—	23	—	23
<b>D-4</b>	Capacity G.P.M.	.60	.61	.92	.94	1.3	1.3	1.6	1.6
	Spray Angle	22°	—	26°	—	24°	—	20°	—
	Max. Throw — Ft.	10	36	10	36	10.5	37	10.5	38
	Max. Vert. Throw Ft.	—	26	—	27	—	28	—	29
<b>D-6</b>	Capacity G.P.M.	1.2	1.3	1.9	2.0	2.7	2.9	3.3	3.5
	Spray Angle	38°	—	41°	—	38°	—	35°	—
	Max. Throw Ft.	10	44	10	45	10.5	46	11	47
	Max. Vert. Throw Ft.	—	28	—	30	—	32	—	33
<b>D-8</b>	Capacity G.P.M.	2.0	2.2	3.1	3.4	4.4	4.8	5.3	5.9
	Spray Angle	48°	—	50°	—	48°	—	43°	—
	Max. Throw Ft.	10	45	10	46	10.5	47	11	48
	Max. Vert. Throw Ft.	—	29	—	32	—	35	—	36