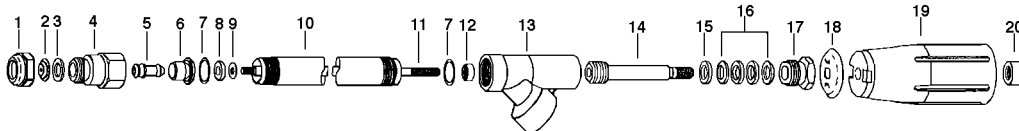


HANDGUNS

SPRAYING SYSTEMS NO. AA18-AL



5163021	AA18-AL6	20" Aluminum Gun	\$79.24
---------	----------	------------------	---------



Heavy duty type rotating handle control

Handle rotates 360° to operate spray gun valve from shut-off to maximum flow position. As handle is turned, spray changes from initial cone spray through intermediate cone spray to straight stream. Corrosion and abrasion resistant hardened stainless steel interchangeable orifice discs. Discs may be purchased separately as desired. TeeJet Tips may also be used with these GunJets.

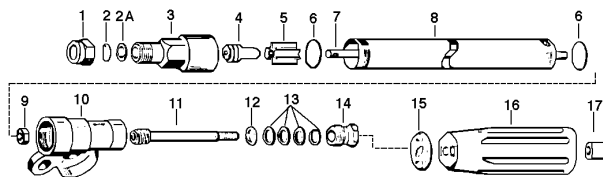
For Pressures: Up To 800 P.S.I.
Overall length: 20"
Weight: 1lbs.

Item	Fimco Code No.	Mfg. Part No.	Description	List Price
1	5046033	CP1325-AL	Cap Alum	\$1.25
2	5063071	D6	Orifice Disc	\$1.43
*3	Available in Kit Only		Tip Gasket, Buna-N	
4	5084050	CP5869-AL	Spray Housing, Alum	\$6.56
*5	Available in Kit Only		Core, Rivet & Core Body Sub-Asb., Alum	
6	5077030	CP5872-AL	Guide Sleeve, Alum	\$2.94
7	5072285	CP4143-CU	Gasket, Copper	\$1.50
*8	Available in Kit Only		Seat Plate, Nylon	
*9	Available in Kit Only		Washer, Type 302 SS	
10	5009278	CP5878-AL	Tubing, Alum	\$21.02
11	5132051	CP5879-AL	Stem, Alum	\$8.77
12	5006192	CP6618-AL	1/4-28 Nut, Alum	\$1.46
13	5002378	CP6896-AL	Inlet Body, Alum	\$28.63
14	5134023	CP5882-NP	Hand Grip Stud, Brass, Nickel plated	\$10.78
15	5016069	CP5883-AL	Packing Washer, Alum	\$1.50
16	5097031	CP5809-LEA	Packing, Thermo-Leather (4 Req'd)	\$1.50
17	5117068	CP5811-AL	Packing Screw, Alum	\$3.34
18	5016149	CP5884-INP	Hand Grip Collar, Steel, Nickel plated	\$7.89
19	5078112	CP5994-NY	Plastic Hand Grip, Nylon	\$9.16
20	5006070	CP5813-AL	Hand Grip Nut, Alum	\$2.51
*	5168368	PK-AB18-AL-KIT	Spare Parts Kit (Items Marked*)	\$22.27

SPRAYING SYSTEMS NO. AA143-AL



GunJet No. 143-AL-GH--length 22-1/4". Weight 1 - 1/4 pounds, 3/4" Female garden hose thread inlet connection, aluminum.



5163014	AA143-AL-GH-6 Gun 3/4" GHT female garden hose connection	\$89.47
---------	---	---------

Handle rotates 360° to operate spray gun valve from shut-off to maximum flow position. As handle is turned, spray changes from initial cone spray through intermediate cone spray to straight stream. Corrosion and abrasion resistant hardened stainless steel interchangeable orifice discs. Discs may be purchased separately as desired. TeeJet Tips may also be used with these GunJets.

For Pressures: Up to 800 p.s.i.
Overall length: 22-1/4"
Weight: 1-1/4 lbs.

** Parts necessary to replace handle on older guns

Item	Fimco Code No.	Mfg. Part No.	Description	List Price
1	5046033	CP1325-AL	Cap	\$1.25
2	5063071	D6	Orifice Disc	\$1.43
*2A	Available in Kit Only		Gasket	
3	5084016	CP10566-AL	Housing	\$17.40
*4	Available in Kit Only		Seat Plug	
5	5009080	CP10571-3-NYB	Guide Vane	\$8.19
*6	Available in Kit Only		Gasket(2 Req'd)	
7	5132007	CP10576-416SS	Stem	\$19.66
8	5009080	CP6604-AL	Tube	\$37.19
9	5006192	CP6618-AL	Nut	\$1.46
10	5002195	CP6898-GH-AL	Inlet Body (GH)	\$31.52
**11	5134023	CP5882-NP	Hand Grip Stud	\$10.78
12	5016069	CP5883-AL	Washer	\$1.50
*13	Available in Kit Only		Packing (4 Req'd)	
14	5117068	CP5811-AL	Screw	\$3.34
**15	5016149	CP5884-INP	Hand Grip Collar	\$7.89
**16	5078112	CP5994-NY	Nylon Hand Grip	\$9.16
**17	5006070	CP5813-AL	Hand Grip Nut	\$2.51
*	5168187	PK-AB143-AL-KIT	Kit Marked	\$28.84

HANDGUNS

HANDGUNS & ADAPTERS

24" ALUMINUM OR BRASS HAND GUN NO. AA2

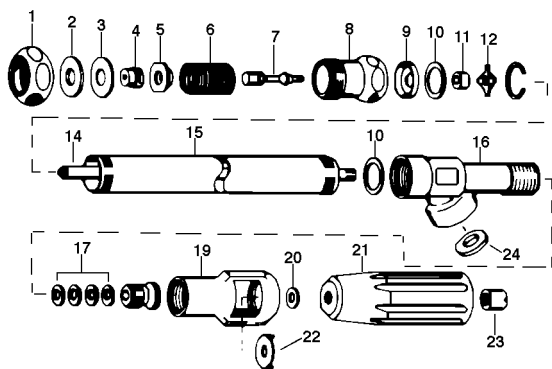
CHOICE OF MODELS AND CAPACITIES

GunJet No. 2 - length 24" weight 3-1/2 lbs. brass garden hose connection. Also available in aluminum as GunJet No. 2AL, 1-1/4 lbs. GunJet No. 2A - Length 15". Weight 2-1/2 lbs., brass, garden hose connection. Also available in aluminum as GunJet No. 2AAL, 1 lb.



5163009	AA2-AL45	24" Aluminum Gun	\$120.13
5163011	AA2A-AL45	15" Aluminum Gun	\$110.01
5163010	AA2-45	24" Brass Gun	\$173.46
5163012	AA2A-45	15" Brass Gun	\$142.94

Handle rotates 360° to operate spray gun valve from shut-off to maximum flow position. As handle is turned, spray changes from initial cone spray through intermediate cone spray to straight stream. Corrosion and abrasion resistant hardened stainless steel interchangeable orifice discs. Discs may be purchased separately as desired. TeeJet Tips may also be used with these GunJets.



Item	Fimco Code No.	Mfg. Part No.	Description	List Price
1	5046032	CP5804-AL	Cap, Alum	\$9.49
2	5005071	CP6106-AL	Disc Adapter, Aluminum	\$2.44
*3	Available In Kit Only			
4	5063097	AY-HSS45	Orifice Insert Gasket	\$9.31
*5	Available In Kit Only			
6	5019074	CP5735-SS	Orifice Insert, SS	\$9.31
*7	Available In Kit Only			
8	5084018	CP5801-AL	Spring Plate, Alum	\$4.83
*9	Available In Kit Only			
9	5019074	CP5735-SS	Spring	\$4.83
*10	Available In Kit Only			
10	5084018	CP5801-AL	Adjusting Stem End	\$9.49
*11	Available In Kit Only			
11	5084018	CP5801-AL	Spray Housing, Alum	\$9.49
*12	Available In Kit Only			
12	5084018	CP5801-AL	Spring Collar, Alum	\$13.92
14	5132016	CP5796-AL	Gasket, (2 Req'd)	\$20.44
15	5009087	CP5795-AL	Seat Plate, Nylon	\$35.91
16	5002216	CP5792-GH-AL	Guide Washer, Alum	\$18.06
*17	Available In Kit Only			
17	5124024	CP5794-AL	Adjusting Stem, Alum	\$3.52
19	5124024	CP5794-AL	Tube, Alum (24")	\$9.16
20	5016068	CP5815-IZP	Hand Grip, Nylon	\$2.51
21	5078112	CP5994-NY	Hand Grip Nut	\$2.51
*22	Available In Kit Only			
22	5006070	CP5813-AL	Washer, Buna-N	\$17.42
23	5006070	CP5813-AL	Hand Grip Collar	\$17.42
*24	Available In Kit Only			
24	5168189	PK-AB2-AL-KIT	Spare Parts Kit, (Marked *)	\$17.42

No. 3056 ADAPTER

Attaches to outlet of No. 46 Trigger Valve, to convert valve to spray gun. Choice of 1/4", 3/8", and 1/2" NPT female outlet connections for attachment of nozzles or extensions.



No. 11740B SWIVEL CONNECTOR

Made with 3/4" garden hose thread connections to fit all GunJet Spray Guns above with similar size inlet connections. Provides free-Swiveling, leak-proof connections at pressures up to 800 psi.

5005072	3056-1/4	1/4" Brass Adapter	\$10.17
5005134	3056-3/8	3/8" Brass Adapter	\$10.17
5005135	3056-1/2	1/2" Brass Adapter	\$10.17
5057090	11740B	3/4" Garden Hose Swivel Brass	\$35.38



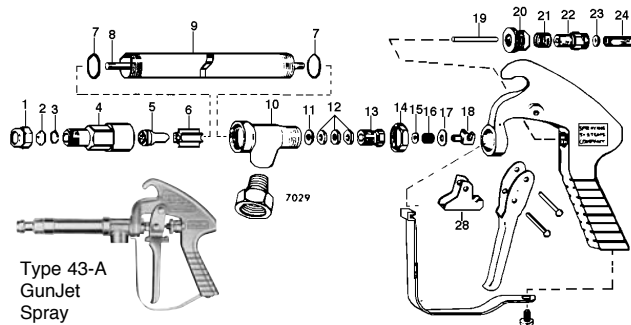
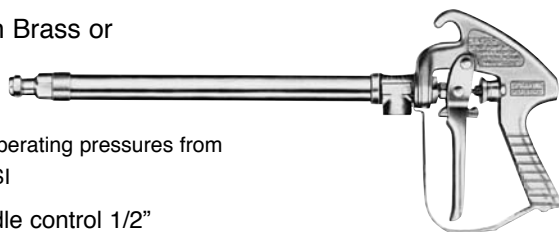
HIGH PRESSURE SPRAY GUN, HAND VALVE & TIP

TRIGGER HAND GUN SPRAYING SYSTEM NO. 43H

Available in Brass or
Aluminum

No. 43H for operating pressures from
200 to 800 PSI

Trigger handle control 1/2"
NPT(F) inlet connection for
livestock, orchard and nursery
spraying field spot spraying and
cleaning barns and equipment
operate at pressures from 30 to
800 P.S.I.



5163006	AA43H-6	23" Brass Gun	\$167.07
5163005	AA43H-AL6	23" Aluminum Gun	\$138.81
5163007	AA43HA-6	14" Brass Gun	\$151.38
5163004	AA43HA-AL6	14" Aluminum Gun	\$132.95
5005119 (7029-AL) GHT(F) x 1/2" NPT(M) Inlet Adapter w/Gasket, Aluminum for No. 43 Gunjets			\$12.09

Item	BRASS GUN		ALUMINUM GUN		Description	Brass Price	Alum. Price
	Fimco Code No.	Mfg. Part No.	Fimco Code No.	Mfg. Part No.			
1	5046022	CP1325	5046033	CP1325-AL	Cap	\$1.31	\$1.25
2	5063071	D6	5063071	D6	Orifice Disc, Stainless Steel	\$1.43	\$1.43
3	Available In Spare Parts Kit Only (Items Marked)				Gasket Nylon		
4	5084023	CP10566	5084016	CP10566-AL	Nozzle Housing	\$18.06	\$17.40
5	Available In Spare Parts Kit Only (Items Marked)				Seat Plug, Assembly		
6		CP10571-2-NYB		CP10571-2-NYB	Guide Vane	\$7.93	\$7.43
7	5072172	CP6943-AL	5072172	CP6943-AL	Gasket, Alum (2 Req'd)	\$1.50	\$1.50
8	5132039	CP19238-416SS	5132039	CP19238-416SS	Stem, Stainless Steel	\$22.90	\$22.90
9	5009120	CP6604	5009080	CP6604-AL	Tubing (23")	\$37.19	\$37.19
10	5002204	CP6492	5002203	CP6492-AL	Inlet Body,	\$41.23	\$29.02
11	Available In Spare Parts Kit Only (Items Marked)				Packing Washer,		
12	Available In Spare Parts Kit Only (Items Marked)				Packing, (3 Req'd)		
13	5117164	CP19237	5117165	CP19237-AL	Packing Screw	\$4.96	\$4.96
14	5006063	CP6599	5006350	CP6599-NP	Locknut	\$3.34	\$3.34
15	5006244	CP9641-INP	5006244	CP9641-INP	Stem Nut, Steel-Plated	\$5.43	\$5.43
16	5019083	CP6595-SS	5019083	CP6595-SS	Trigger Stop Spring	\$2.93	\$2.93
17	5016061	CP7991-IZP	5016061	CP7991-IZP	Washer	\$1.46	\$1.46
18	5166017	CP6597-INP	5166017	CP6597-INP	Trigger Guide	\$15.48	\$15.48
19	5134010	CP6591-SS	5134010	CP6591-SS	Spring Stud	\$3.50	\$3.50
20	5006072	CP6589-IZP	5006072	CP6589-IZP	Stop Adjusting Nut	\$4.57	\$4.57
21	5019069	CP6594-SS	5019069	CP6594-SS	Spring	\$1.55	\$1.55
22	5117070	CP6588-IZP	5117070	CP6588-IZP	Spring Screw	\$4.83	\$4.83
23	5016071	CP6592-302SS	5016071	CP6592-302SS	Guide Washer	\$2.44	\$2.44
24	5019107	CP6593-2-SS	5019107	CP6593-2-SS	Main Spring (For 43H)	\$4.96	\$4.96
28	5131012	CP6510-INP	5131012	CP6510-INP	Trigger Stop	\$5.14	\$5.14
	5168370	PK-AB43-KIT	5168190	PK-AB43-AL-KIT	Spare Parts Kit (Item *)	\$38.24	\$38.24

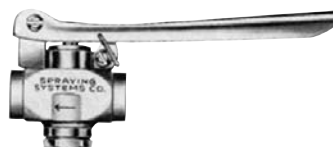
HAND VALVE & CONEJET TIP



5138552 & 5138553



5002294



5143155



5078103

Fimco Code No.	Mfg. Part No.	Description	Connection		List Price
			In	Out	
5143155	AA36-1/4	Trigger Valve w / Lock	1/4 FNPT	1/4 FNPT	\$68.48
5078103	4754	Brass Rubber Covered Handle	3/4 FGHT	1/4 MNPT	\$15.75
5002294	CP1322	Brass Male Nozzle Body	1/4 MNPT	Nozzle Body	\$2.18
5138552	5780-AX45	Brass Adjustable Cone Jet Tip	Fits Nozzle Body (1322)		\$29.47
5138553	5780-AX60	Brass Adjustable Cone Jet Tip	Fits Nozzle Body (1322)		\$29.47

HANDGUNS

HANDGUNS

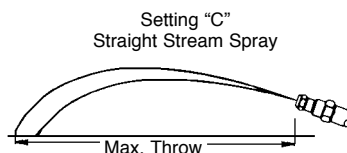
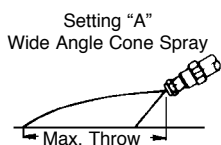
Performance Chart For AA2-AL Hand Gun

GunJet No.	Orifice Disc No.	Performance	Operating Data			
			Liquid Pressure in PSI			
			100 PSI Setting		800 PSI Setting	
			A	C	A	C
2-20	AY-HSS 20	Capacity - GPM	.53	.90	1.5	2.5
		Max. Vert. Throw - Ft.	—	25	—	33
		Max. Horiz. Throw - Ft.	6	35	8	42
2-30	AY-HSS 30	Capacity - GPM	.79	1.4	2.2	4.0
		Max. Vert. Throw - Ft.	—	27	—	34
		Max. Horiz. Throw - Ft.	7	38	9	45
2-45	AY-HSS 45	Capacity - GPM	1.2	2.3	3.4	6.5
		Max. Vert. Throw - Ft.	—	30	—	36
		Max. Horiz. Throw - Ft.	8	41	9	48
2-60	AY-HSS 60	Capacity - GPM	1.6	3.6	4.5	10
		Max. Vert. Throw - Ft.	—	32	—	40
		Max. Horiz. Throw - Ft.	9	44	10	52
2-90	AY-HSS 90	Capacity - GPM	2.3	4.9	6.7	14
		Max. Vert. Throw - Ft.	—	35	—	44
		Max. Horiz. Throw - Ft.	10	47	12	57
2-120	AY-HSS 120	Capacity - GPM	3.2	6.4	9.0	17
		Max. Vert. Throw - Ft.	—	37	—	48
		Max. Horiz. Throw - Ft.	11	49	13	62
2-180	AY-HSS 180	Capacity - GPM	4.7	11	13	31
		Max. Vert. Throw - Ft.	—	37	—	48
		Max. Horiz. Throw - Ft.	12	49	14	62

Performance Chart For AA12, AA18, and AA43-H Hand Guns

(No. AA143 May also use this chart For Performance Specifications)

GunJet No.	Orifice Disc No.	Performance	Operating Data			
			Liquid Pressure in PSI			
			100 PSI Setting		800 PSI Setting	
			A	C	A	C
12-2 18-AL2 43H-2	D2	Capacity - GPM	.45	.47	1.3	1.3
		Max. Vert. Throw - Ft.	—	22	—	26
		Max. Horiz. Throw - Ft.	10	33	11	35
12-4 18-AL4 43H-4	D4	Capacity - GPM	.92	.94	2.6	2.7
		Max. Vert. Throw - Ft.	—	27	—	32
		Max. Horiz. Throw - Ft.	10	36	11	40
12-6 18-AL6 43H-6	D6	Capacity - GPM	1.9	2.0	5.3	5.8
		Max. Vert. Throw - Ft.	—	30	—	36
		Max. Horiz. Throw - Ft.	10	45	11	50
12-8 18-AL8 43H-8	D8	Capacity - GPM	3.1	3.4	8.8	9.6
		Max. Vert. Throw - Ft.	—	32	—	39
		Max. Horiz. Throw - Ft.	10	46	11	51
12-10 18-AL10 43H-10	D10	Capacity - GPM	4.1	5.0	10.2	14.1
		Max. Vert. Throw - Ft.	—	33	—	40
		Max. Horiz. Throw - Ft.	10.5	49	12	54



SPRAY GUNS

RC-10N SPRAYER CONTROLS



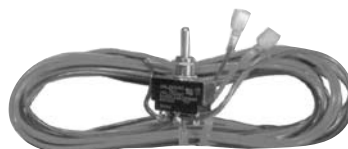
Part #	Description	List Price
5272608	Remote Control System with 1541A pressure regulator, 1999A-1 solenoid valve, and 1988 valve mounting bracket	\$417.44
5272245	Remote Control System with 1560A pressure regulator	\$291.62

SWITCH & WIRE ASSEMBLY



Switch and Wire Assembly for electric pressure regulators. Includes two-way switch with 8' battery power cord and 8' wires from switch to regulator.

Part #	Description	List Price
5275389	Switch & Wire Assembly for 1541A or 1560A pressure regulator	\$46.27



Switch & Wire Assembly for on-off control of one solenoid shutoff valve. Includes on-off switch with 8' battery power cord and 8' wires with connectors for solenoid valve.

Part #	Description	List Price
5275390	Switch & Wire Assembly	\$22.09

PRESSURE REGULATORS



5143193	\$117.82
TIR 3/4" Pressure Regulator	
5143224	\$134.62
TIR 1" Pressure Regulator	

The 1560A Electric Pressure Regulator is equipped with a precision high torque motor and gear reduction, and high strength valve body for heavy-duty service. Chemical resistant glass-filled nylon body, stainless steel motor shaft and butterfly, and viton seal. Low current draw, 50 MA at 12 volts. Maximum recommended pressure is 150 PSI. Speed at 12 volts is 1 RPM; at 6 volts is 1/2 RPM.

SPRAY GUN

SPRAY GUN NO. 5163100

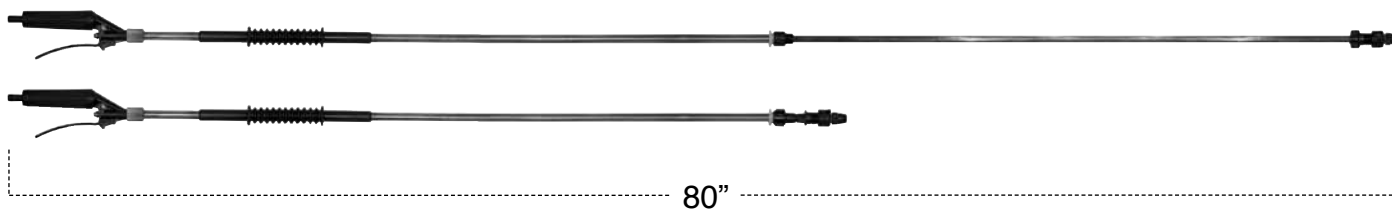
- Overall Gun Length is 29"
- Metal Extension is 19" Long w/30° Offset Tip
- Hose Shank Connection is 3/8"
- Tip Has Adjusting Pattern From Cone Spray To Straight Stream
- Maximum Operating Pressure is 100 P.S.I.
- Trigger Locks For Continuous Operation



Fimco Code No.	Description	List Price
5163100	29" Trigger Gun	\$9.95

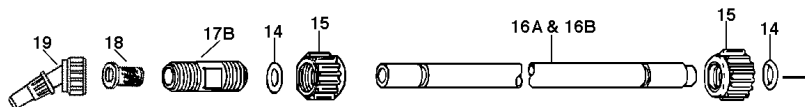
TELESCOPIC WAND HANDGUN

GREAT FOR TREES, HOUSES AND OTHER HARD TO REACH PLACES!



5163117	Telescoping wand	3 lbs.	\$29.95
---------	------------------	--------	---------

TRIGGERJET POLYPROPYLENE SPRAY GUNS

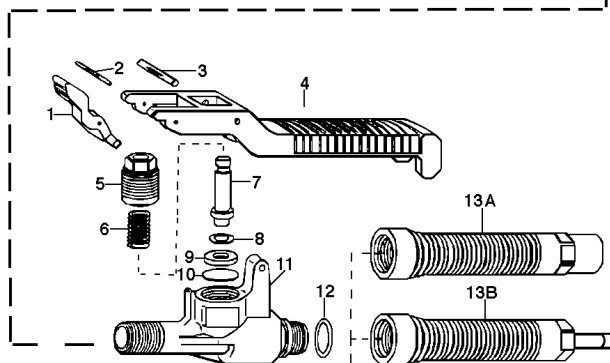


SPRAY GUN No. 22670



22670-PP Includes:

- 22650 Triggerjet Spray Gun (1/4" FNPT Only)
- 15" or 24" Extension Wand
- 8079 50 Mesh Strainer
- 5500 PPB-8X Adjustable Conejet Spray Tip
- Straight and 45° adapter
- Maximum Operating Pressure 150 PSI



22650 TriggerJet

Fimco Code No.	Trigger Jet No.	Extension Length	List Price
5163040	22650-PP-1/4	Without Extension	\$27.40
5163034	22670-PP-15 1/4	15"	\$43.18
5272927	22670-PP-24 1/4	24"	\$49.78

HANDGUNS

Item	Fimco Code No.	Mfg. Part No.	Description	List Price
1	5077031	CP22656-NY	Trigger Lock	\$1.83
2	5101129	CP22671-IZP	Groove Pin	\$1.15
3	5101130	CP22672-IZP	Groove Pin	\$1.15
4	5092007	CP22655-PP	Trigger	\$3.26
5	5108060	CP22658-PP	Spring Retainer	\$2.20
* 6	Available In Kit Only Marked *			
7	5132054	CP22657-NY	Stem	\$1.68
* 8	Available In Kit Only Marked *			
9	5016186	CP22659-PP	Washer	\$2.20
* 10	Available In Kit Only Marked *			
11	5002394	CP22651-PP	Body	\$8.45
* 12	Available In Kit Only Marked *			
13A	5078133	CP22654-PP	Handle (1/4" NPT (F) Conn. Poly	\$5.43
13B	5078168	CP22653-1/4-PP	Handle (with 1/4" hose shank Conn.) Poly	\$5.43

Item	Fimco Code No.	Mfg. Part No.	Description	List Price
*14	Available In Kit Only Marked *			
15	5046122	CP22668-PP	Cap, (2 Required)	\$1.46
16A	5065039	CP22663-15-FRP	Extension Tube, 15"	\$9.71
16B	5065043	CP22663-24-FRP	Extension Tube, 24"	\$15.81
17A	5005187	CP22673-PP	45° Adapter	\$1.70
17B	5005188	CP22664-PP	Straight Adapter	\$1.75
	5065045	22665-15-PP	Extension Tube Sub-Assembly, 15" (Includes 14, 15, 16A, 17A & 17B)	\$11.02
	5065046	22665-24-PP	Extension Tube Sub-Assembly, 24" (Includes 14, 15, 16B, 17A & 17B)	\$18.35
18	5116019	8079-PP-50	Strainer	\$1.14
19	5018312	38720-PPB-X8	Nozzle Assembly	\$6.40
19	5018313	38720-PPB-X18	Nozzle Assembly	\$6.40
*	7771187	PK-AB22670-PP-KIT	Spare Parts Kit (Includes items marked with *)	\$12.62

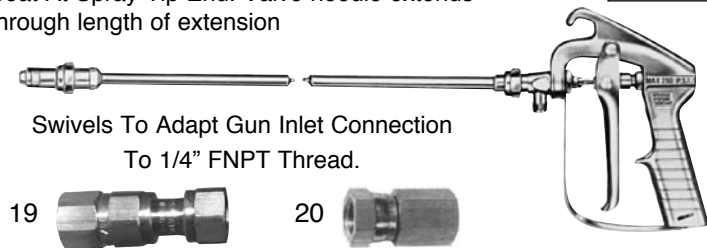
GUNJET HAND GUNS & ADJUSTABLE TIPS

GUNJET NO. AA23L-7676

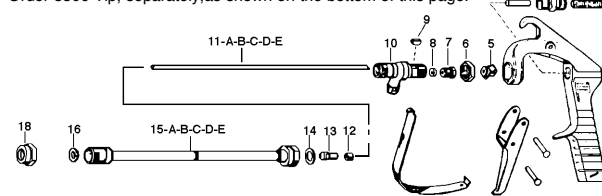
Maximum Pressure 250 PSI 23L-7676 with choice of 8", 18", 24", 36", and 48" Extensions Shut-Off Seat At Spray Tip End. Valve needle extends through length of extension

5163031	AA23L-7676-8"	Gunjet w/ 8" Extension	\$100.41
5163026	AA23L-7676-18"	Gunjet w/18" Extension	\$107.04
5163027	AA23L-7676-24"	Gunjet w/24" Extension	\$113.47
5163028	AA23L-7676-36"	Gunjet w/36" Extension	\$122.61
5163030	AA23L-7676-48"	Gunjet w/48" Extension	\$146.02

*Price of Gun Does Not Include 5500 Tip as Shown In Picture. Order 5500 Tip, separately, as shown on the bottom of this page.



Swivels To Adapt Gun Inlet Connection To 1/4" FNPT Thread.



Item	Fimco Code No.	Mfg. Part No.	Description	List Price
*2	Available In Kit Only		Spring, 302 Stainless Steel	
3	5117065	CP7480-IZP	Spring Screw	\$4.82
5	5077029	CP8591-IZP	Trigger Guide	\$1.79
6	5006065	CP7486-IENP	Locknut, Steel Zinc Plated	\$4.50
7	5117137	CP16071-NP	Packing Screw	\$3.20
*8	Available In Kit Only		Cup Packing Buna-N	
9	5089030	CP7892-IZP	Key	\$2.94
10	5002356	CP16052-NP	Inlet Body, Brass Nickel Plated	\$22.27
11A	5132040	CP7677-8-SS	Stem, Stainless Steel (For 8" Extension)	\$21.20
11B	5132041	CP7677-18-SS	Stem, Stainless Steel (For 18" Extension)	\$26.21
11C	5132042	CP7677-24-SS	Stem, Stainless Steel (For 24" Extension)	\$34.37
11D	5132043	CP7677-36-SS	Stem, Stainless Steel (For 36" Extension)	\$46.29
11E	5132044	CP7677-48-SS	Stem, Stainless Steel (For 48" Extension)	\$60.91
12	5132045	CP7679-1	Stem Guide Nut, Brass	\$2.93
*13	Available In Kit Only		Stem end, brass	
14	5072272	CP4743-TEF	Gasket Teflon	\$5.36
15A	5065014	7715-8	Extension, Brass (For 8" Length) Extension Assembly, Brass (Incl. Items 11A, 12, 13, 14, & 15A) For 8" Length	\$11.68
	5065030	13206-8		\$41.72
15B	5065015	7715-18	Extension, Brass (For 18" Length) Extension Assembly, Brass (Incl. Items 11B, 12, 13, 14, & 15B) For 18" Length	\$14.71
	5065031	13206-18		\$49.66
15C	5065016	7715-24	Extension, Brass (For 24" Length) Extension Assembly, Brass (Incl. Items 11C, 12, 13, 14, 15C) For 24" Length	\$15.90
	5065032	13206-24		\$58.45
15D	5065018	7715-36	Extension, Brass (For 36" Length) Extension Assembly, Brass (Incl. Items 11D, 12, 13, 14, & 15D) For 36" Length	\$20.11
	5065033	13206-36		\$74.15
15E	5065019	7715-48	Extension, Brass (For 48" Length) Extension Assembly, Brass (Incl. Items 11-E, 12, 13, 14, & 15E) For 48" Length	\$24.38
	5065034	13206-48		\$92.27
*16	5115025	CP7490-BRTF	Valve Seat Teflon	\$5.63
18	5046043	CP1325-NP	Cap, Brass Nickel Plated	\$2.21
*	5168244	AB23L-7676 -KIT	Spare Parts Kit Items Marked *	\$17.01
19	5057086	11990-10	Swivel 1/4 NPS x 1/4 FNPT Female	\$16.80
20	5010101		Connector 1/4 NPS x 1/4 FNPT (Does Not Swivel When Tight)	\$4.50

HANDGUNS

ADJUSTABLE TIPS NO. 5500

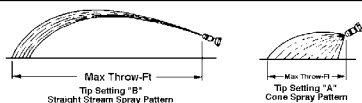
Adjustable ConeJet Tip No.	Performance	Liquid Pressure in PSI											
		20 PSI		30 PSI		40 PSI		60 PSI		100 PSI		60 PSI	
		Setting		Setting		Setting		Setting		Setting		Setting	
		A	B	A	B	A	B	A	B	A	B	A	B
5500-X2	Capacity-GPM Spray Angle Max. Throw Ft.	.025 40° 1.5	.091 — 23	.03 60° 1.5	.11 — 26	.033 68° 2	.13 — 27	.04 75° 2	.16 — 28	.05 80° 2	.20 83° 2	.058 — 2	.25 — 28
5500-X3	Capacity-GPM Spray Angle Max. Throw-Ft.	.037 57° 2	.13 — 27	.045 68° 2	.17 — 30	.17 72° 2	.05 76° 2	.19 — 31	.058 80° 3	.23 — 31	.073 82° 3	.30 — 3	.088 — 31
5500-X5	Capacity-GPM Spray Angle Max. Throw-Ft.	.061 61° 2.5	.21 — 31	.076 70° 2.5	.26 — 34	.082 74° 3	.30 — 35	.10 77° 3	.37 — 35	.13 80° 3	.48 81° 3	.15 — 3	.58 — 35
5500-X8	Capacity-GPM Spray Angle Max. Throw-Ft.	.097 66° 3	.33 — 34	.12 71° 3	.40 — 37	.13 74° 3	.47 — 38	.16 77° 3	.57 — 38	.21 80° 4	.74 — 38	.25 80° 4	.90 — 38

Polypropylene or Brass



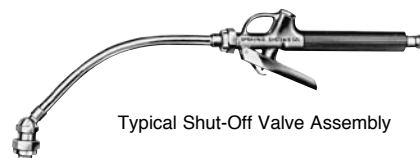
Adjustable ConeJet Tips fit standard TeeJet Spray Nozzle body. Body of No. 5500 rotates for spray selection from wide angle cone to straight stream. For capacities from .02 to .04 GPM at 40 p.s.i.

Fimco Code No.	Mfg. Part No.	Description	List Price
5138543	5500-X2	Brass Adjustable Tip	\$19.06
5138544	5500-X3	Brass Adjustable Tip	\$19.06
5138564	5500-PPB-X3	Polypropylene Adjustable Tip	\$8.66
5138545	5500-X5	Brass Adjustable Tip	\$19.06
5138565	5500-PPB-X5	Polypropylene Adjustable Tip	\$8.66
5138453	5500-X8	Brass Adjustable Tip	\$19.06
5138566	5500-PPB-X8	Polypropylene Adjustable Tip	\$8.66
5138659	5500-X18	Brass Adjustable Tip	\$19.06
5138654	5500-PPB-X18	Polypropylene Adjustable Tip	\$8.66
5138661	5500-X26	Brass Adjustable Tip	\$19.06



SPRAY GUNS & SHUT-OFF VALVES

Top quality hand valves for use with spray nozzles, extensions and handles to suit your application needs. Hand valve assemblies may be made from parts shown on this page. The "typical assembly" shown at right includes 4727 handle, 4688 valve, 4673-8 curved extension with swivel body, TeeJet cap and flat spray tip.



Typical Shut-Off Valve Assembly

TRIGGERS FOR SPRAY GUNS

	Fimco Code No.	Mfg. Part No.	Description	Connection		Flow	Max. Press	Max. Wt.	List Price
				In	Out				
	5143152	4688	Trigger Valve w/lock	1/4 FIPT	Tee Jet Cap	2 GPM	250	5 oz	\$46.52
	5143153	6466	Same as 4688 less Trigger lock w/extra long Handle	1/4 FIPT	Tee Jet Cap	2 GPM	250	5 oz	\$50.16
	5143154	6104	Trigger Valve w/lock	1/4 FIPT	1/4 FIPT	2 GPM	250	5 oz	\$46.08
	5143174	6590	Trigger Valve less lock	1/4 FIPT	1/4 FIPT	2 GPM	250	5 oz	\$46.82
	5143155	AA36-1/4	Trigger Valve w/lock	1/4 FIPT	1/4 FIPT	7 GPM	150	13 oz	\$68.48
	5143216	AA36-3/8	Trigger Valve w/lock	3/8 FIPT	3/8 FIPT	7 GPM	150	13 oz	\$68.48

HANDGUNS

VALVE HANDLES



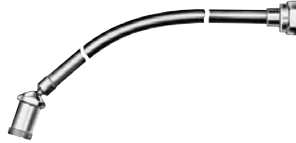

CHOICE OF VALVE HANDLES-for above valves
Outlet connections are 1/4" NPT(M) to fit 1/4" NPT (F) inlets of all valves shown.
Choice of types for every need.

	5078102	4727	Brass Rubber Covered	1/4 MNPS	1/4 MIPT	4 1/4 oz.	\$11.72
	5078103	4754	Brass Rubber Covered	3/4 FGHT	1/4 MIPT	5 1/4 oz.	\$15.75
	5078152	4725	1/8" Brass Pipe w/Bushing Slip Hose over Pipe to form Handle	3/8" OD	1/4 MIPT	1 1/2 oz.	\$10.14

EXTENSIONS & POLYPROPYLENE SPRAY GUNS

EXTENSIONS FOR SPRAY GUNS

STRAIGHT WITH FIXED BODY (Pressure to 250 PSI)

	Fimco Code No.	Mfg. Part No	Extension Length	List Price
	5065014	7715-8	8"	\$11.68
	5065015	7715-18	18"	\$14.71
	5065016	7715-24	24"	\$15.90
	5065017	7715-30	30"	\$19.06
	5065018	7715-36	36"	\$20.11
	5065019	7715-48	48"	\$24.38
CURVED WITH SWIVEL BODY (Pressure to 125 PSI)				
	5065008	4673-8	8"	\$19.55
	5065009	4673-18	18"	\$22.76
	5065010	4673-24	24"	\$23.89
	5065011	4673-30	30"	\$26.30
	5065012	4673-36	36"	\$28.14
	5065013	4673-48	48"	\$32.21
CURVED WITH FIXED BODY (Pressure to 250 PSI)				
	5065002	6671-8	8"	\$13.65
	5065003	6671-18	18"	\$16.64
	5065004	6671-24	24"	\$17.19
	5065005	6671-30	30"	\$19.44
	5065006	6671-36	36"	\$22.13
	5065007	6671-48	48"	\$25.59
CURVED HIGH PRESSURE (Pressure to 1000 PSI)				
	5065020	9527-8	8"	\$36.84
	5065021	9527-18	18"	\$42.62
	5065022	9527-24	24"	\$43.68
	5065023	9527-36	36"	\$56.63
	5065024	9527-48	48"	\$61.27

4673- for pressures to 125 P.S.I. 6671- & 7715- for pressures to 250 psi Fits Models 23L, 31 GunJet spray Guns and trigger valves. Designed for use with TeeJet strainers, caps, and spray tips.

Use when spraying pressures will be greater than 250 P.S.I. Fits models 23H and 31 GunJet Spray Guns. Body designed for use with TeeJet strainers, caps and spray tips. Fixed position body, brass constructed with rubber covered handle (except in 8" length). Warning: Do not use at pressure higher than those specified for valve or spray gun.

HANDGUNS

TRIGGERJET POLYPROPYLENE SPRAY GUNS

AA30L-PP

- Inlet Is 1/4" FIPT
- Flow Rates to 5 G.P.M.
- Maximum Pressure 150 P.S.I.
- Wetted Parts Are Polypropylene
- Stainless Steel and Viton



AA30L-PP-15

w/15" Extension and Adjustable ConeJet Tip



GunJet No.	Description	List Price
AA30L-PP	Without Extension or Tip	\$51.47
AA30L-PP-15	W/ 15" Extension & Adj. Tip	\$71.50

5273959 PISTOL GRIP HANDGUN

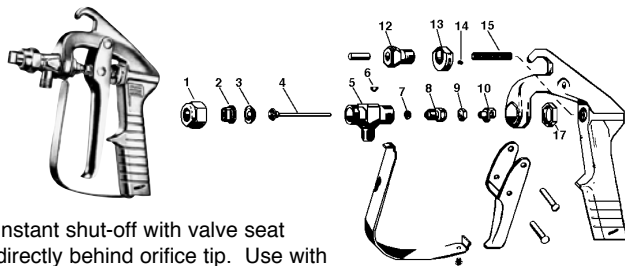


- Flow Rates Up to 5 G.P.M.; 300 P.S.I.
- Comfortable Pistol Grip Handgun
- 18" Aluminum Wand
- Adjustable Pattern Tip (Cone to Straight Stream)

GunJet No.	Description	List Price
5273959	Handgun w/X-26 Tip	\$24.95

HIGH PRESSURE SPRAY GUNS & WANDS

AA23H GUNJET SERIES SPRAY GUN

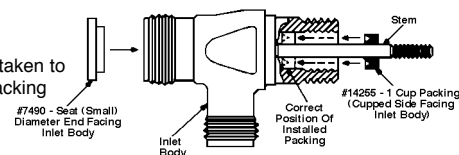


Instant shut-off with valve seat directly behind orifice tip. Use with any TeeJet Tip and with low and high pressure. Flow rates to 5 GPM. With comfortable trigger grip. Trigger guard helps prevent accidental discharge. Trigger lock holds trigger in "off" position. 1/4" NPS (M) inlet connection.

NOTE:
Slide #14255-1 cup packing onto stem before inserting packing completely into inlet body, making sure cupped side of packing is facing inlet body.

CAUTION:

Extra care should be taken to prevent damage to packing from threads on stem and inlet body.



5271814	AA23H	Gunjet w/Cap less tip	\$69.50
---------	-------	-----------------------	---------

Item	Fimco Code No.	Mfg. Part No.	Description	List Price
1	5046082	CP7890-NP	Cap Brass - I.N.P.	\$8.12
2			Spray Tip (Order By No.)	
*3	5115025	CP7490-BRTF	Valve Seat, Teflon	\$5.63
*4	Available In Kit Only			
5	5002356	CP16052-NP	Inlet Body	\$22.27
6	5089030	CP7892-IZP	Key	\$2.94
*7	Available In Kit Only			
8	5117137	CP16071-NP	Packing Screw	\$3.20
9	5006064	CP7484-SS	Stem Nut	\$3.06
10	5077009	CP7481-INP	Trigger Guide	\$11.33
12	5117138	CP9421-INP	Safety Lock	\$7.96
13	5045010	CP39698-NY	Safety Lock Cam	\$9.91
14	5117139	CP9423-I	Set Screw	\$2.86
*15	Available In Kit Only			
17	5006065	CP7486-IENP	Lock Nut	\$4.50
	5168238	PK-AB23H-KIT	Repair Kit Marked*	\$23.20
	5010101		Swivel - 1/4FNPT x 1/4FNPS (Does Not Swivel After Tight)	\$4.50
	5057086	11990-10	Swivel 1/4FNPT x 1/4FNPS (Swivels After Tight)	\$16.80

HANDGUNS

1/8DT TIPS FOR WANDS

1/8DTSS
1/8" NPT female inlet connection



1/8DTSS VeeJet Nozzles are available in orifice sizes--04 through --09

H1/8DT	1/8" Female Brass Tip	\$3.68
H1/8DTSS	1/8" Female Stainless Steel (Order By Number)	\$10.44

Orifice Capacity Size*	NOZZLE CAPACITY									
	G.P.M. at P.S.I., based on water									
	40 P.S.I.	100 P.S.I.	200 P.S.I.	300 P.S.I.	400 P.S.I.	500 P.S.I.	600 P.S.I.	700 P.S.I.	800 P.S.I.	1000 P.S.I.
-04	.40	.63	.89	1.1	1.3	1.4	1.6	1.7	1.8	2.0
-05	.50	.79	1.1	1.4	1.6	1.8	1.9	2.1	2.2	2.5
-055	.55	.87	1.2	1.5	1.7	1.9	2.1	2.3	2.5	2.8
-06	.60	.95	1.3	1.6	1.9	2.1	2.3	2.5	2.7	3.0
-065	.65	1.03	1.5	1.8	2.1	2.3	2.5	2.7	2.9	3.3
-07	.70	1.1	1.6	1.9	2.2	2.5	2.8	2.9	3.1	3.5
-08	.80	1.2	1.8	2.2	2.5	2.8	3.1	3.4	3.6	4.0
-09	.90	1.4	2.0	2.5	2.9	3.2	3.5	3.8	4.0	4.5

* All above Flat Spray Nozzles are available with spray angles of 15°, 25°, 40°, 50°, 65°, 80° and 95°. Dash lines in table above (as in -04) indicate space for digits to identify spray angle such as "15" in 1504. Solid Stream Nozzles are also available in all capacity sizes above.

HIGH PRESSURE WANDS

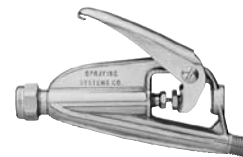


5271406	18" Galvanized	\$7.50
---------	----------------	--------

- Pressure-molded Handle
- Continuous 1/8" Steel Barrel
- 1/8" MNPT Both Ends

NO. AA31 GUNJET

For flow rates up to 5 GPM. No. 31 for pressures up to 500 P.S.I. Comfortable palm fitting gun. For use with any TeeJet spray tip. 1/4" NPS (M) inlet connection.



5163015	AA 31	Gun, Less Tip	\$72.80
5163016	*AA 31TL	Gun, Less Tip	\$65.92
	PK-AB31-KIT	Kit	\$17.57
*Trigger Lock Included			

SWIVELS FOR GUN CONNECTIONS

1	5057086	(11990-10)1/4" FNPS x 1/4 FNPT Female Brass Swivel	\$16.80
2	5010101	Connector 1/4" FNPS x 1/4" FNPT Female (Does Not Swivel after tight)	\$4.50

